

Bridge analysis,
design and
assessment
software

Examples of bridge projects undertaken with LUSAS

LUSAS Marketing Department

Major Bridges



Queensferry Crossing



Mersey Gateway Project



Bay Bridge dismantling



Paseo Bridge dismantling

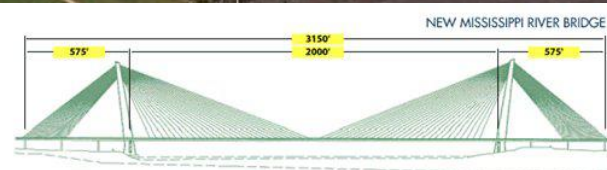


West Gate Bridge upgrade



Original New Mississippi Bridge

I-70 Mississippi River Bridge

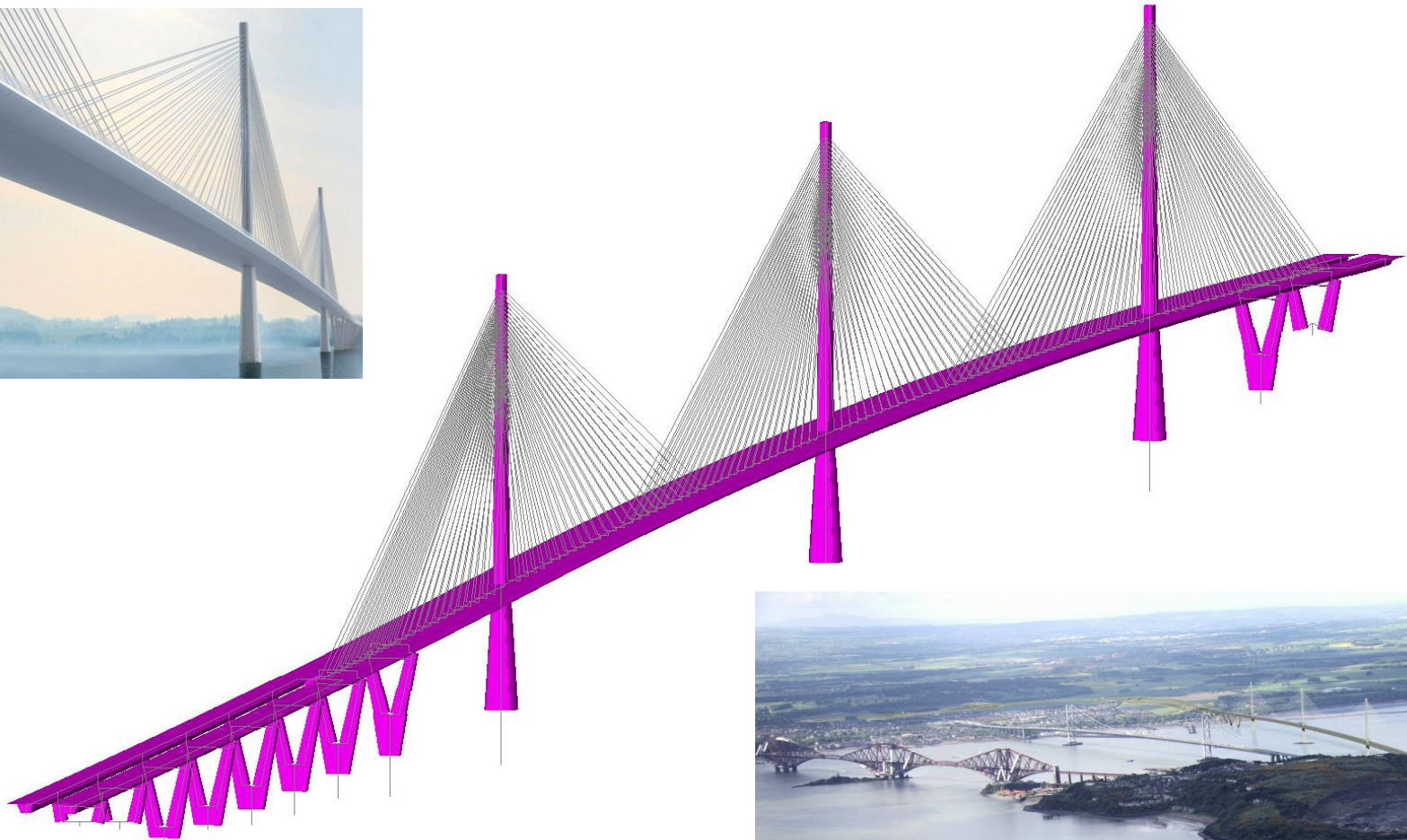


Modjeski & Masters

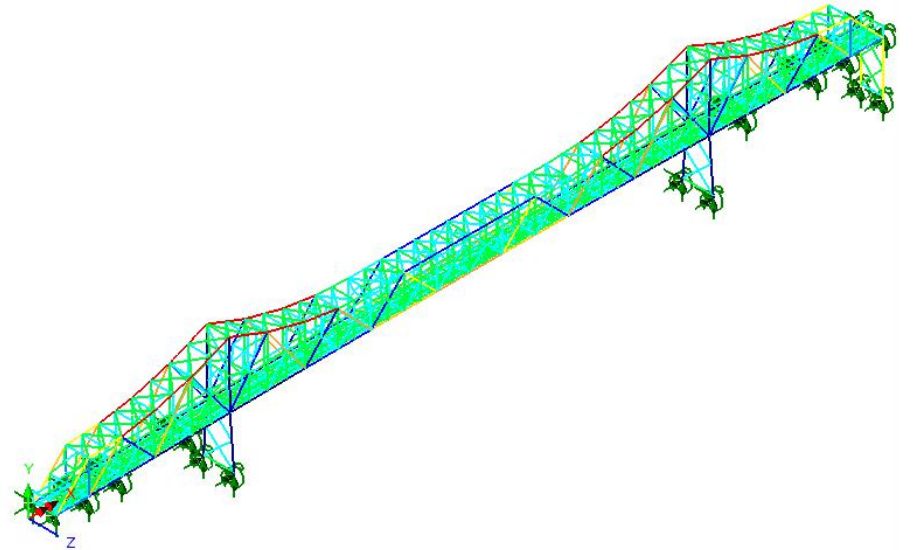
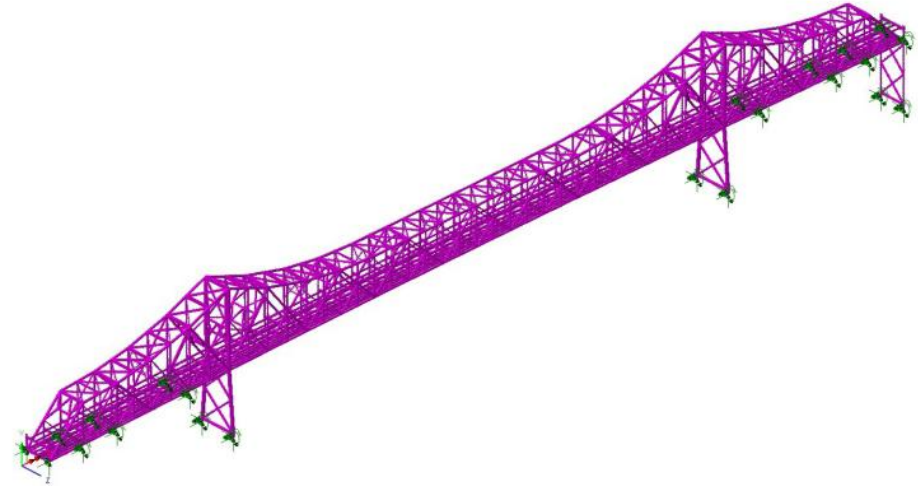
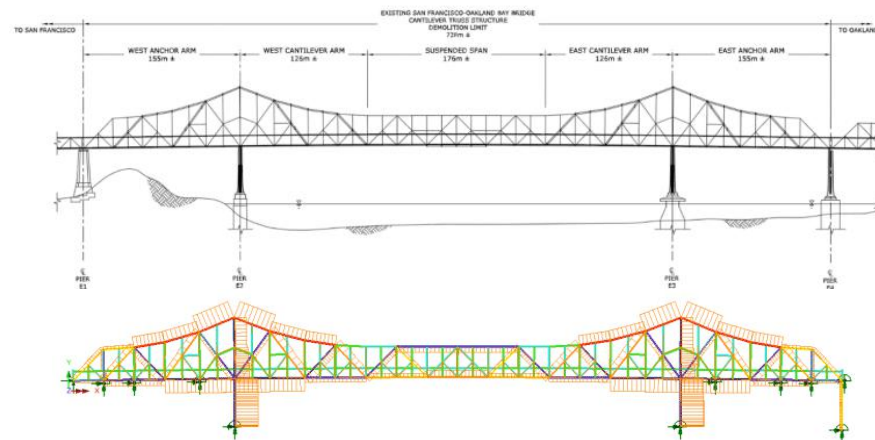
Forth Rail and Road Bridges



... and the new Queensferry Crossing



SFOBB East Main Span (Demolition)

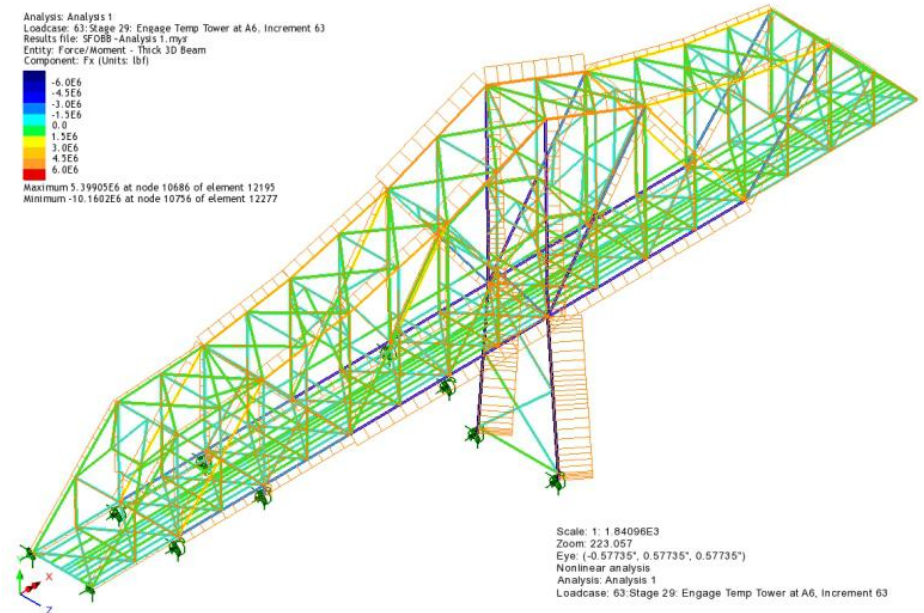


Foothills Bridge Co

SFOBB East Main Span (Demolition)



Analysis: Analysis 1
 Loadcase: 63: Stage 29: Engage Temp Tower at A6, Increment 63
 Results file: SFOBB - Analysis 1.mys
 Entity: Force/Moment - Thick 3D Beam
 Component: Fx (Units: lbf)
 -6.0E6
 -4.5E6
 -3.0E6
 -1.5E6
 0.0
 1.5E6
 3.0E6
 4.5E6
 6.0E6
 Maximum 5.39905E6 at node 10686 of element 12193
 Minimum -10.1662E6 at node 10796 of element 12277



Foothills Bridge Co

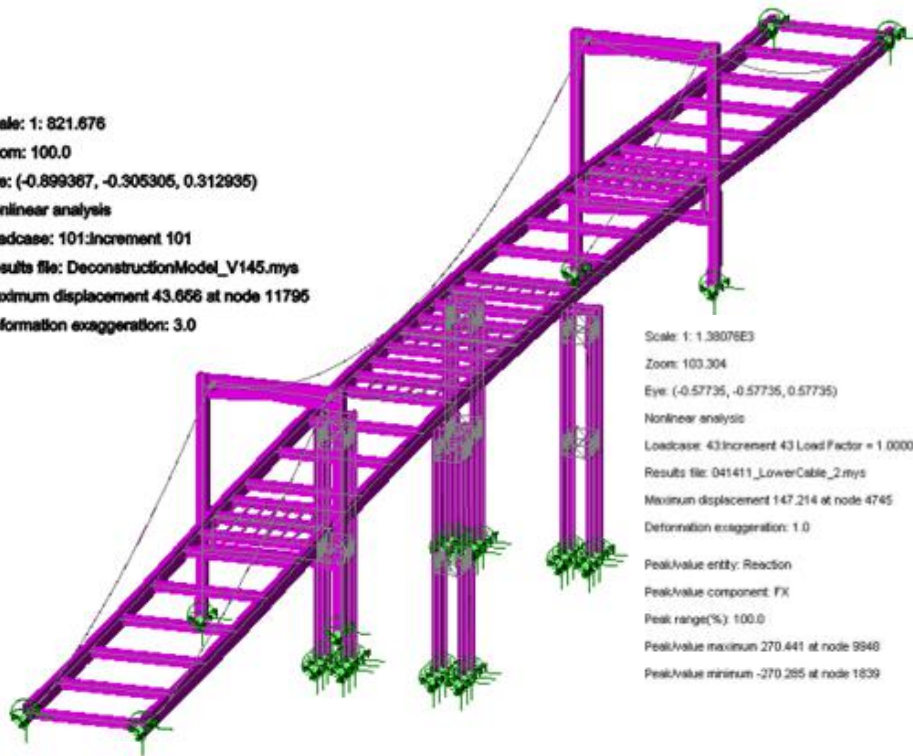
Paseo Bridge (Demolition)



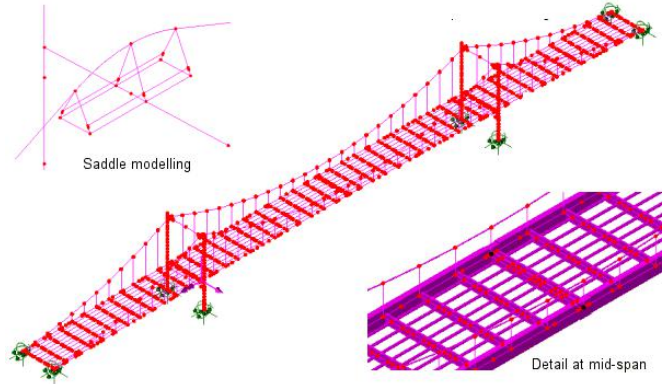
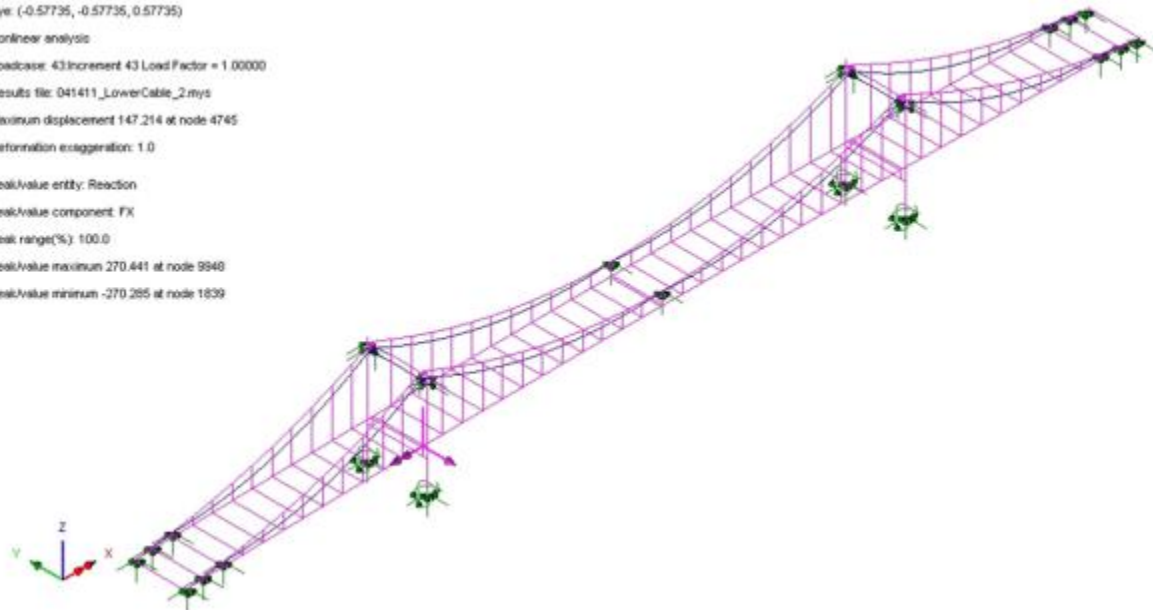
Genesis Structures

Paseo Bridge (Demolition)

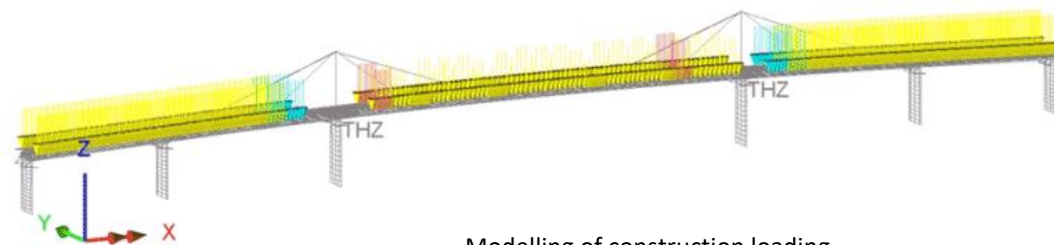
Scale: 1: 821.676
Zoom: 100.0
Eye: (-0.899367, -0.305305, 0.312935)
Nonlinear analysis
Loadcase: 101:Increment 101
Results file: DeconstructionModel_V145.mys
Maximum displacement 43.666 at node 11796
Deformation exaggeration: 3.0



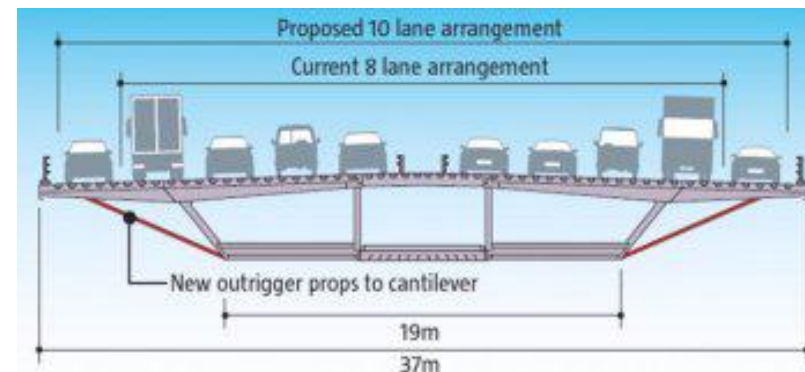
Scale: 1: 1.38076E3
Zoom: 103.304
Eye: (-0.57735, -0.57735, 0.57735)
Nonlinear analysis
Loadcase: 43:Increment 43 Load Factor = 1.00000
Results file: 041411_LowerCable_2.mys
Maximum displacement 147.214 at node 4745
Deformation exaggeration: 1.0
Peak/Value entity: Reaction
Peak/Value component: FX
Peak range(%): 100.0
Peak/Value maximum 270.441 at node 9940
Peak/Value minimum -270.285 at node 1839



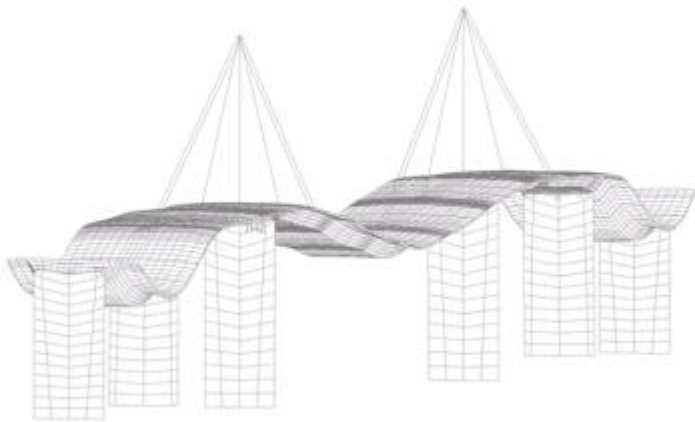
West Gate Bridge (Upgrade)



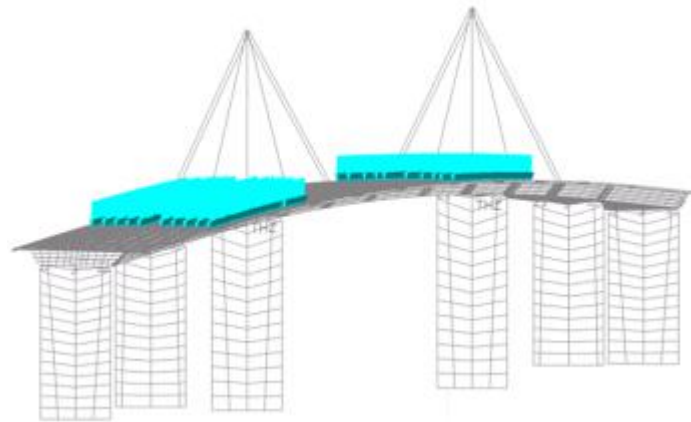
Modelling of construction loading



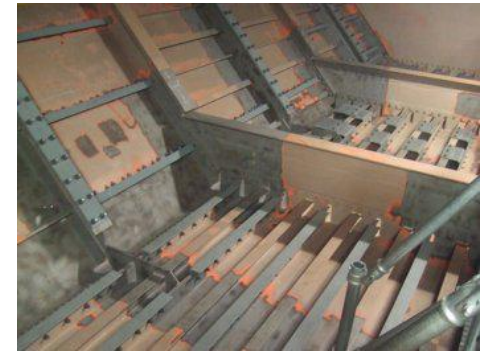
West Gate Bridge, (Upgrade)



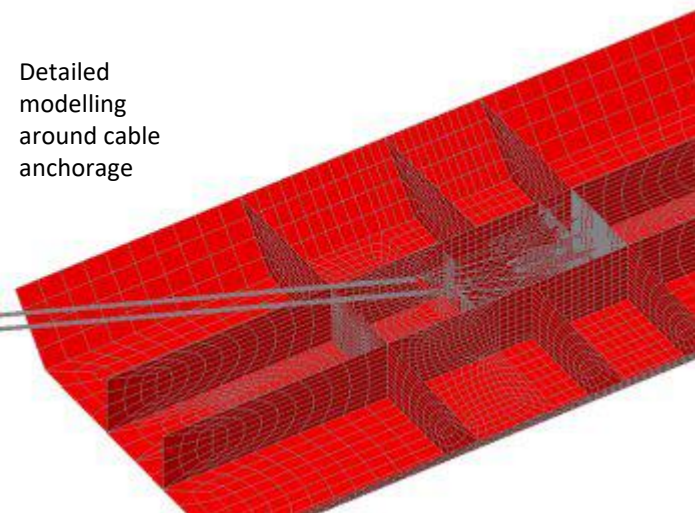
LUSAS model showing the permanent load deflection and cable creep



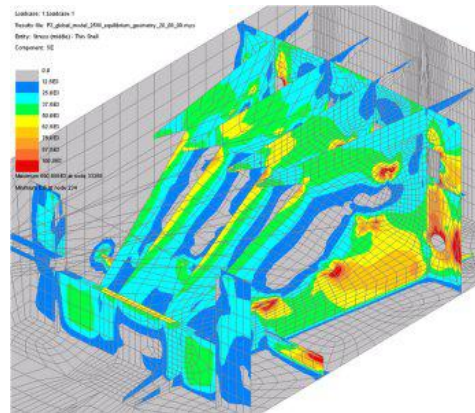
Live load modelling



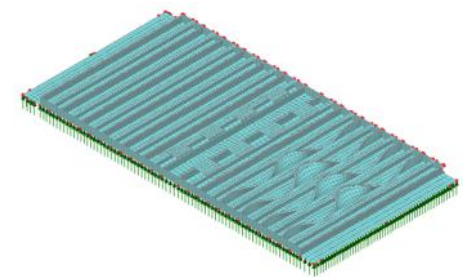
Bulb flat stiffened plates showing different types of strengthening



Detailed modelling around cable anchorage



Stresses in anchorage plates



Analysis of bulb flat stiffened section of box

Storebaelt Bridge



Dee River Crossing



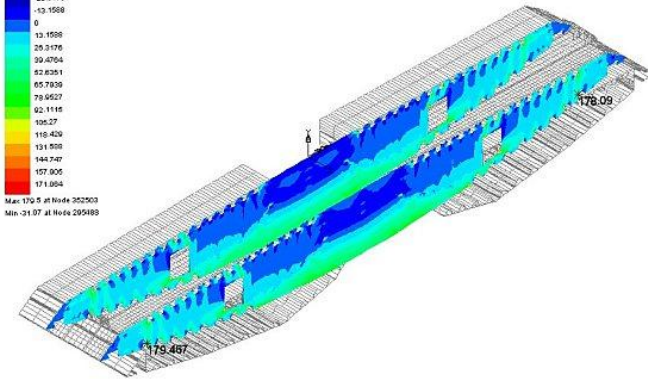
Gwangyang Bridge



Enveloping on ALL
Envelope 96_MAX
TOP STRESS
CONTOURS OF S1

28.3176
-13.1568
0
13.1568
28.3176
50.4764
52.8351
55.7829
79.5627
92.1115
105.27
119.429
131.769
144.747
157.805
171.064

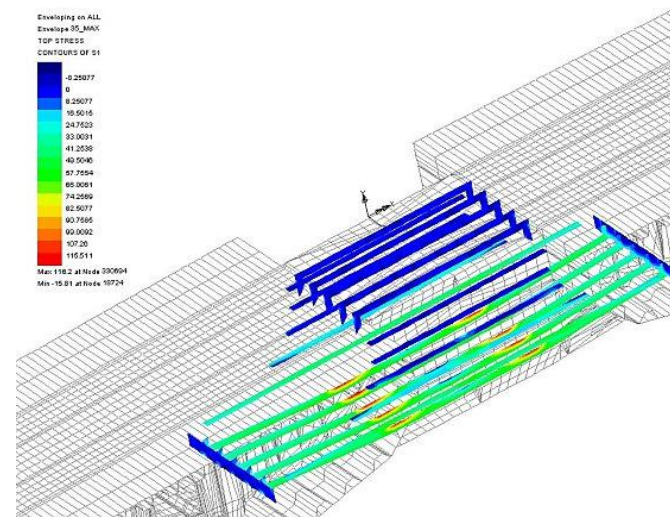
Max: 170.5 at Node 352503
Min: -31.07 at Node 295989



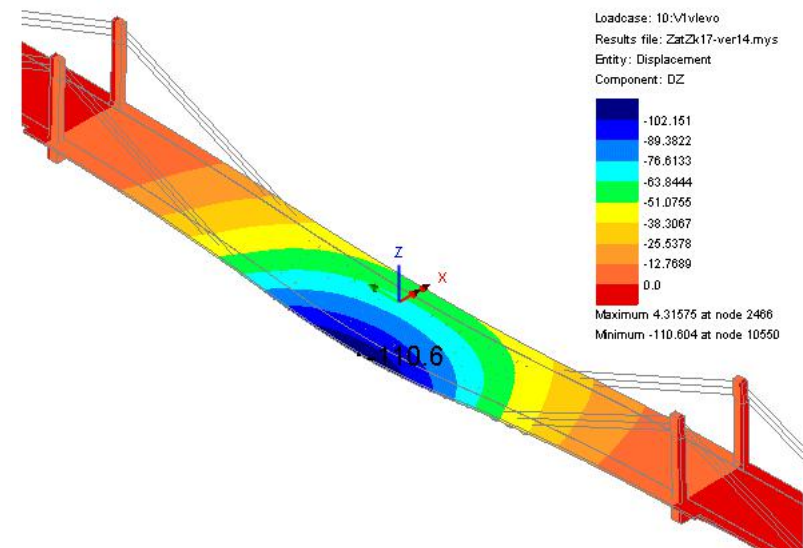
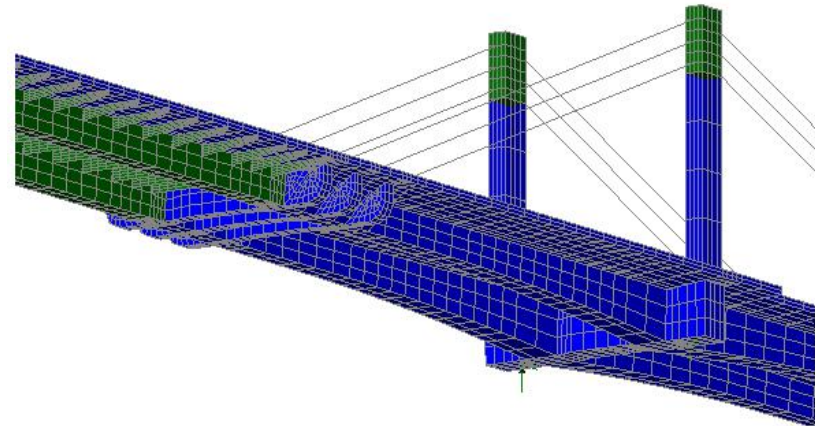
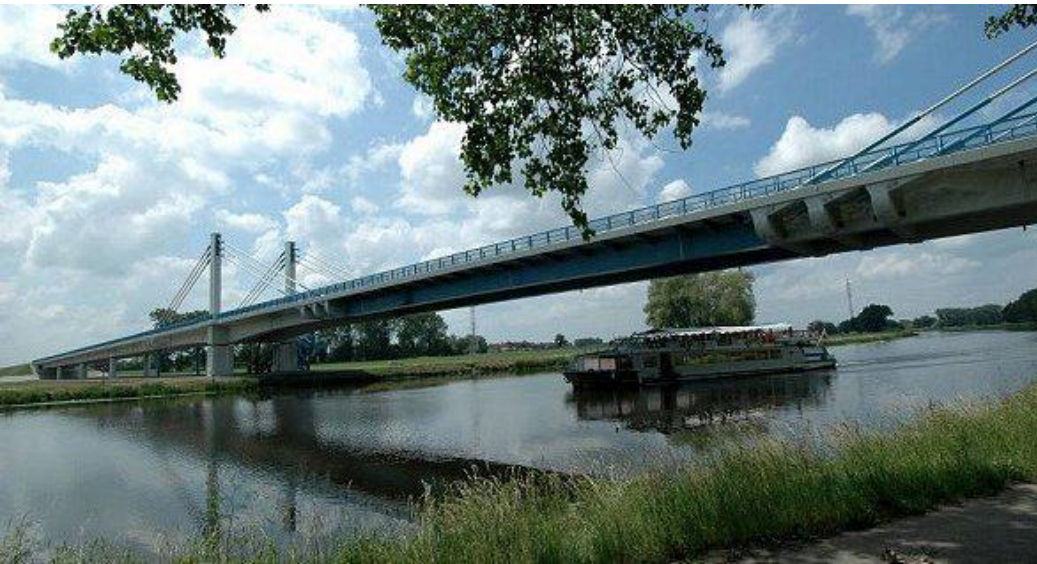
Enveloping on ALL
Envelope 95_MAX
TOP STRESS
CONTOURS OF S1

-0.25077
0
9.25077
19.5015
24.7522
33.0031
41.2538
49.5046
57.7554
66.0061
74.2569
82.5077
90.7586
99.0092
107.26
115.511

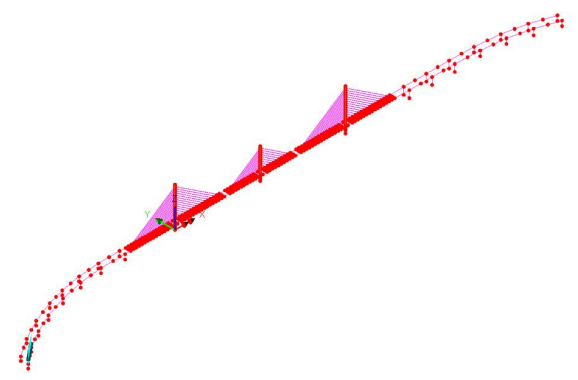
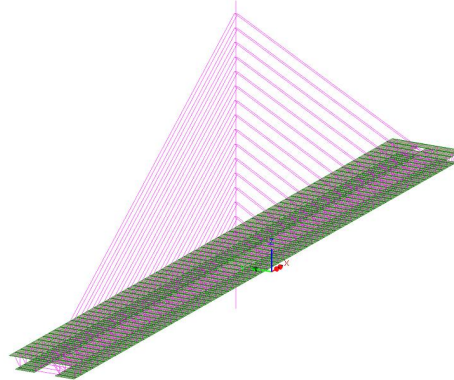
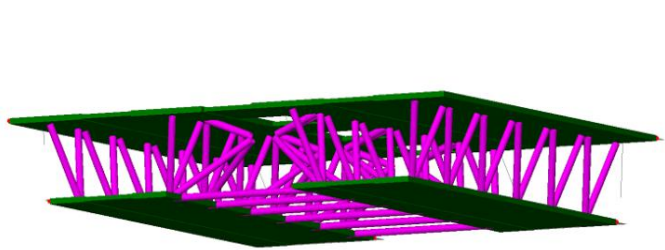
Max: 116.2 at Node 290694
Min: -15.51 at Node 10724



Bridge over River Labe



Mersey Gateway Bridge



Gifford / Flint & Neill

... for Arch Bridges



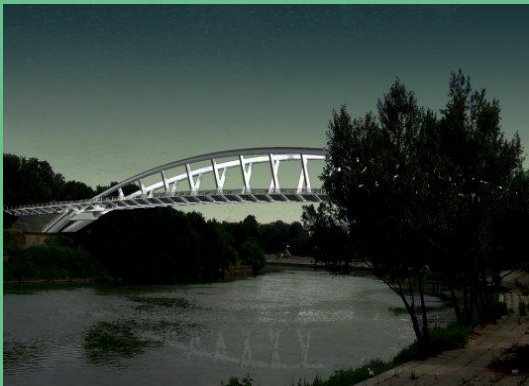
West 7th Street Bridge



Sperritt Tunnel



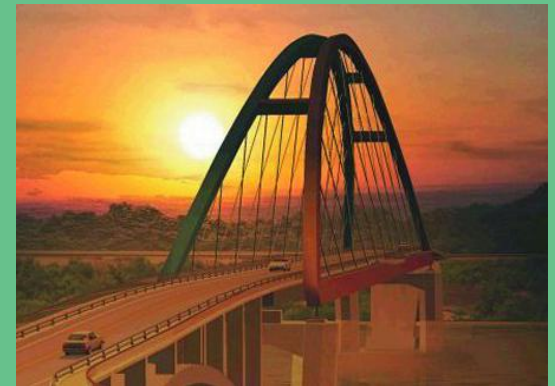
Kingston Bridge



Ponte della Musica



194 Gateway Arches



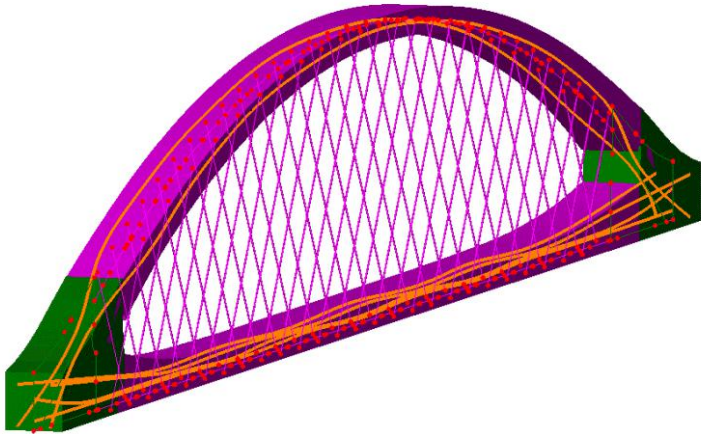
Namdo Bridge

West 7th St Bridge

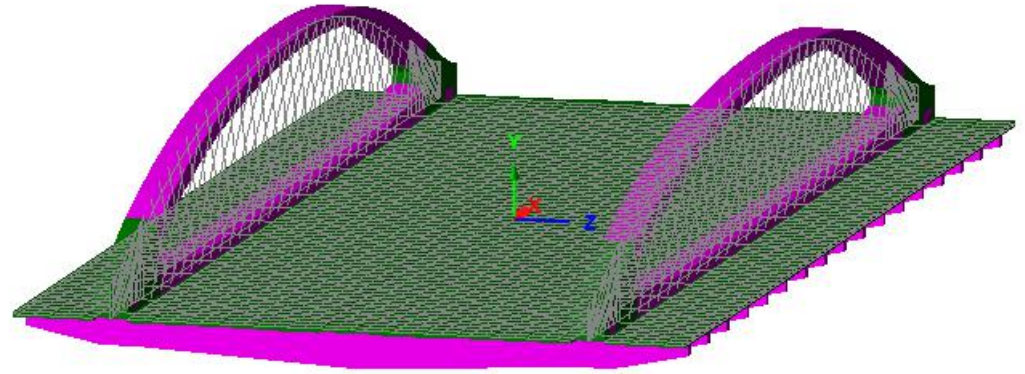


“First Bridge of its kind in the world”

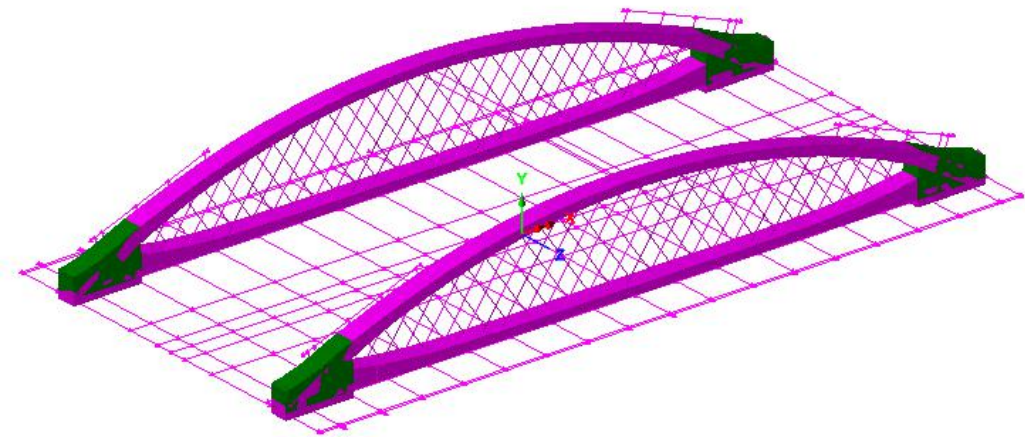
West 7th St Bridge



Arch modelling methodology

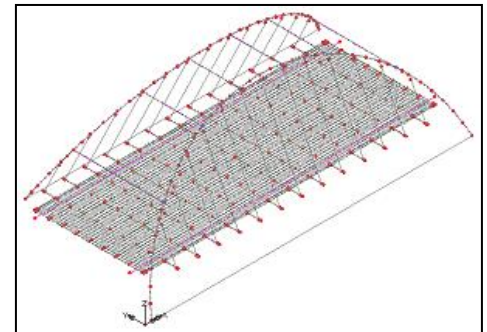
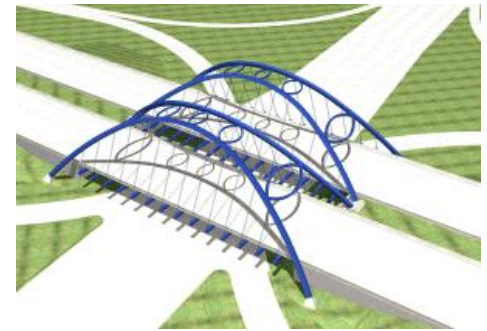


Eigenmode analysis for a three lane loading assessment



Construction sequence modelling for a single span

I-94 Gateway Bridge

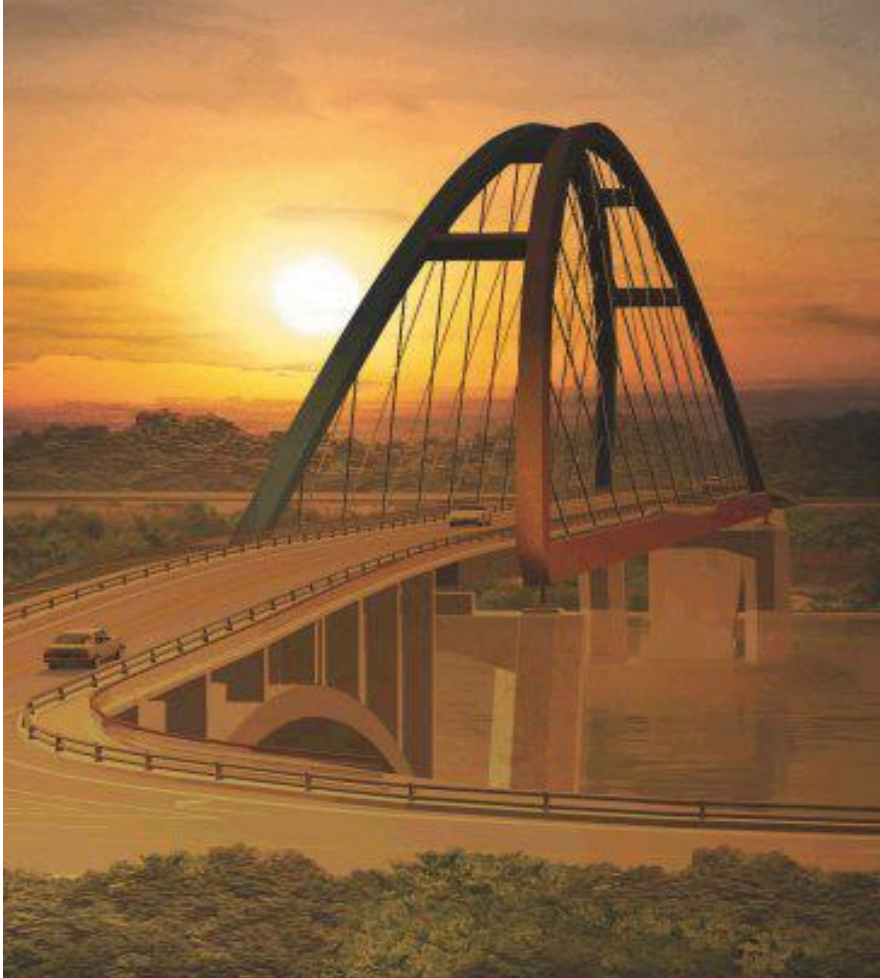


Alfred Benesch and Company

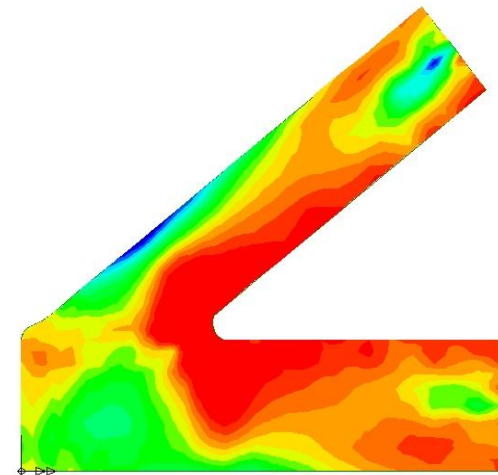
Walton Bridge



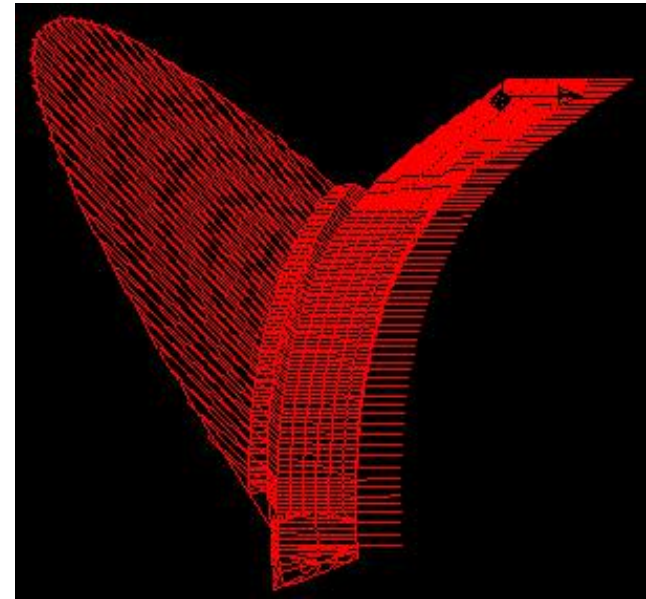
Namdo Bridge



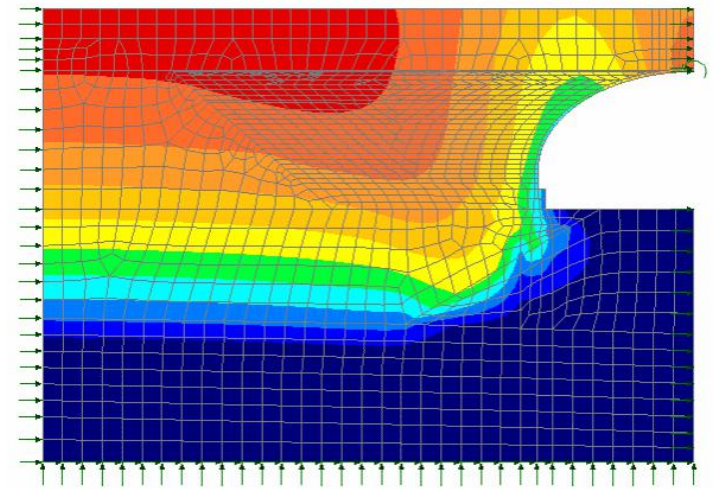
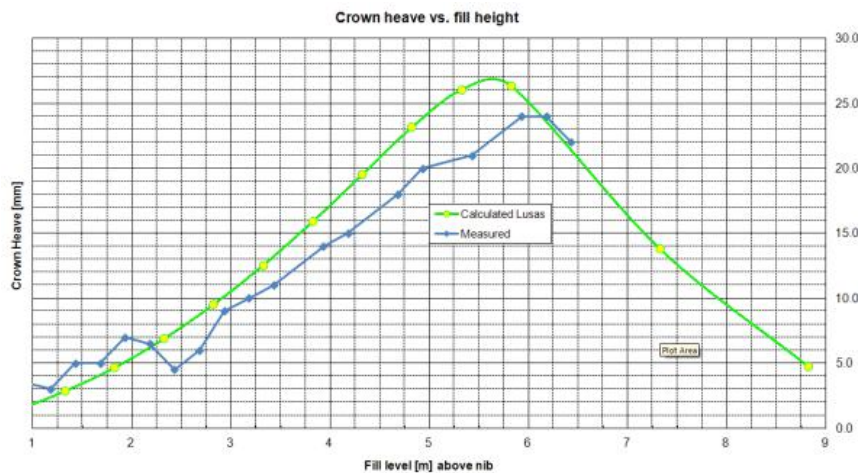
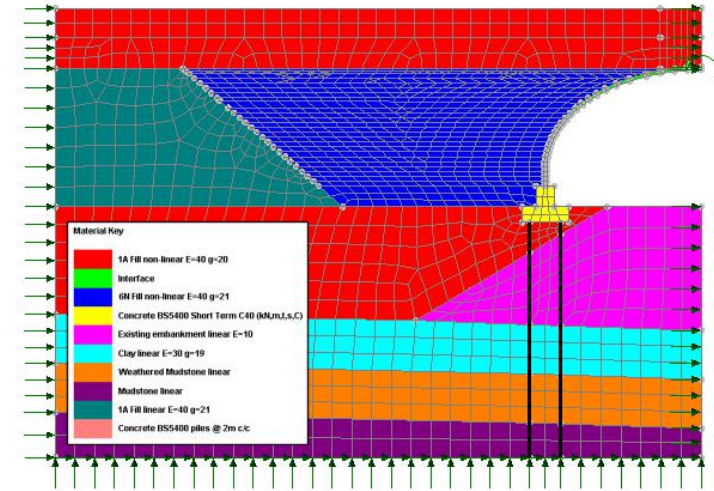
TOP STRESS
CONTOURS OF S3



York Millennium Footbridge



BEBO Arch System Modelling



Box girder bridges



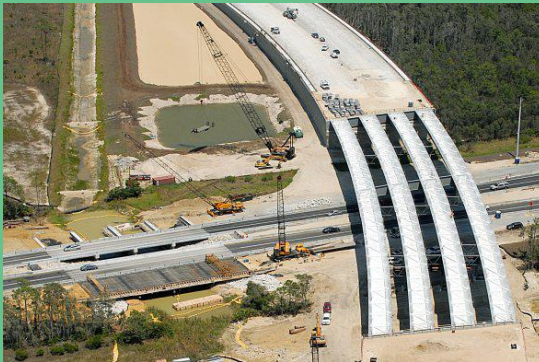
Currie Road Bridge



DART Blue line extension



Interchange Bridges, Road 431



Estero Parkway

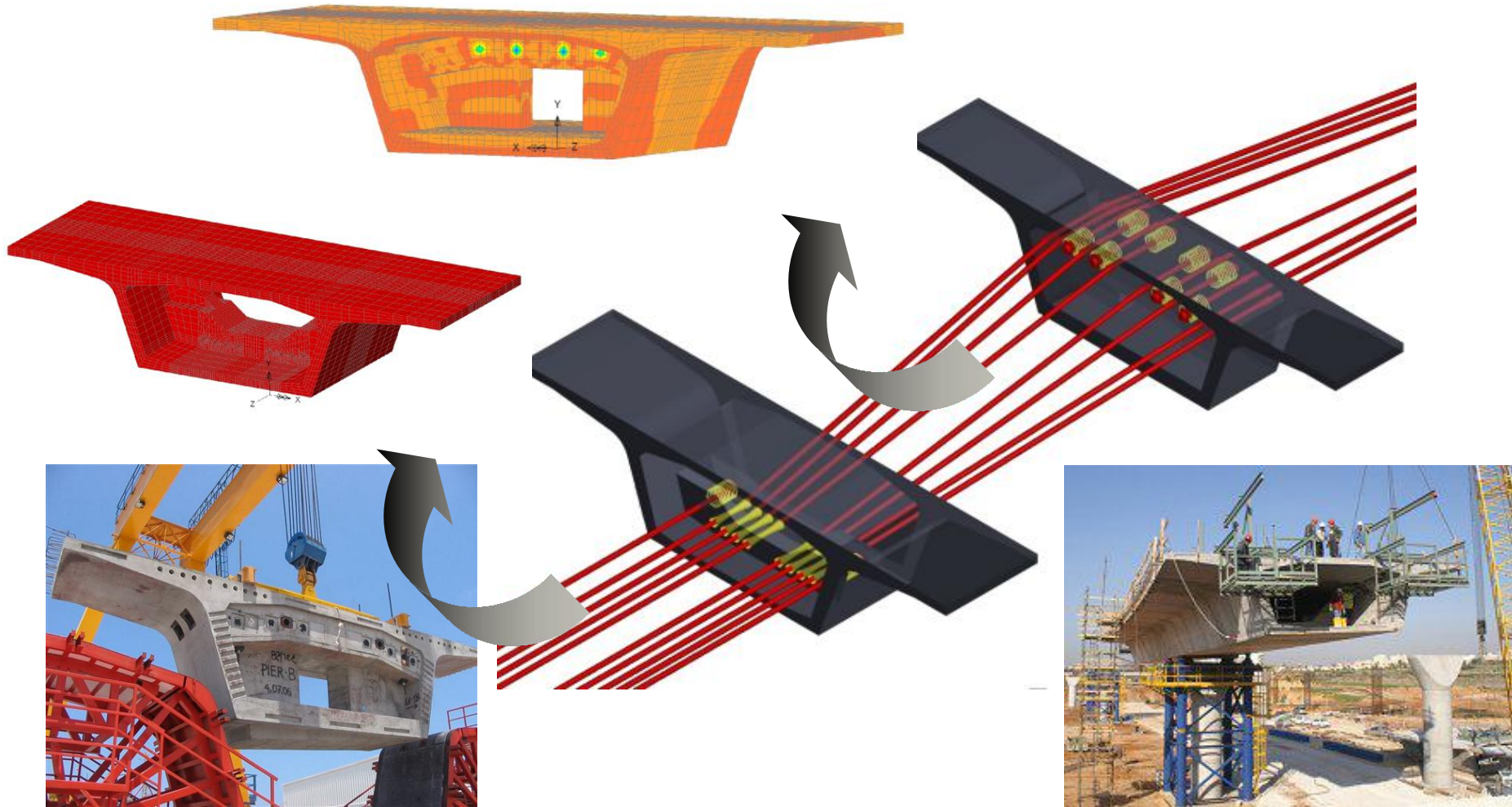


West Gate Bridge upgrade

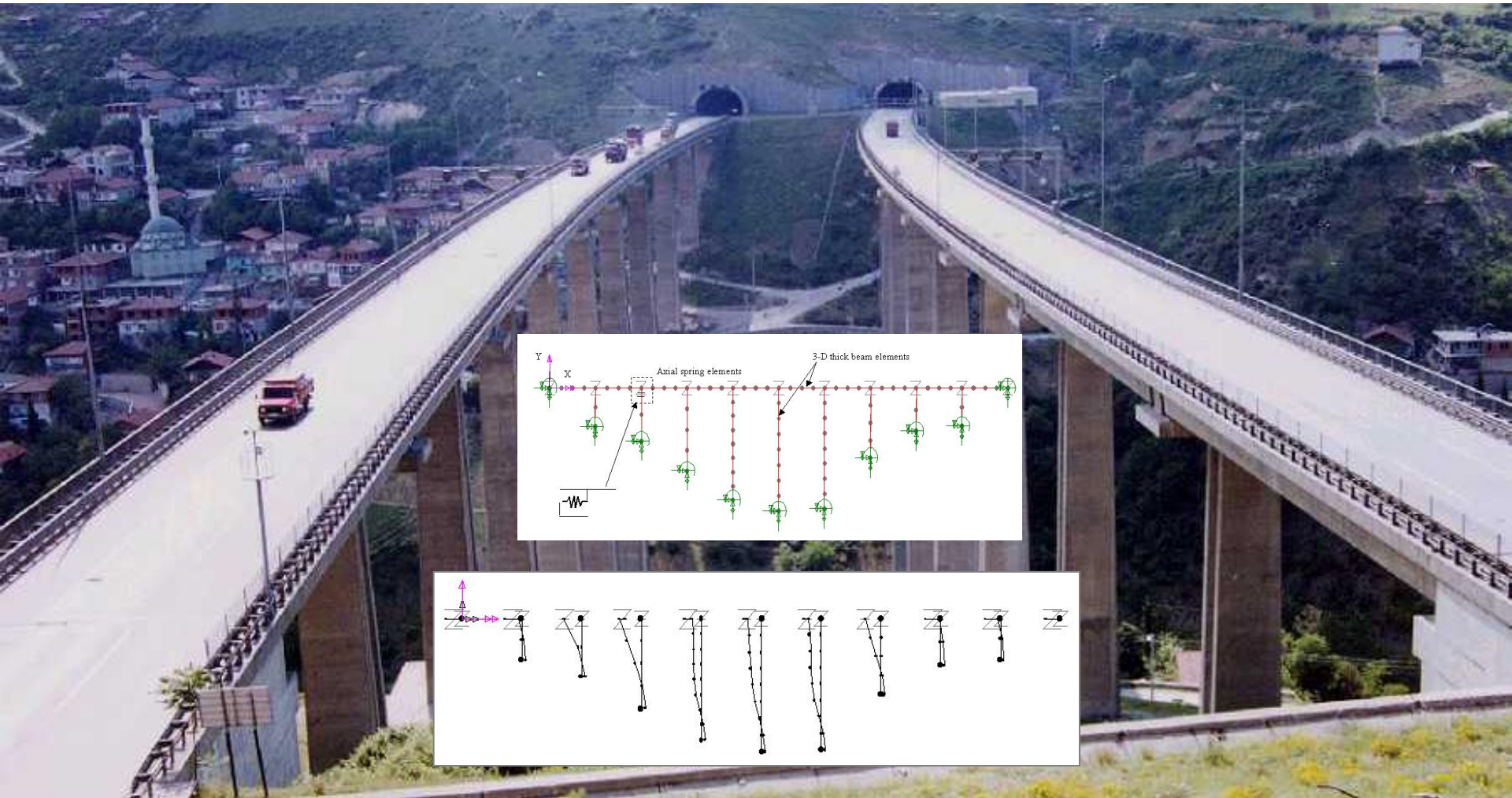


Avenues Walk

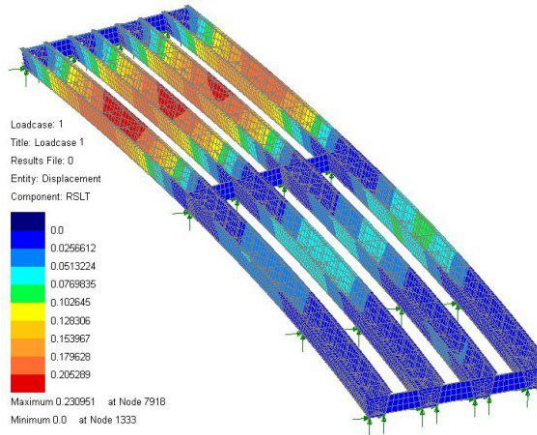
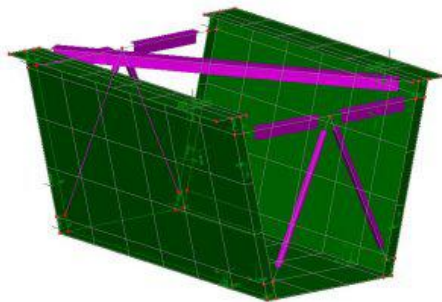
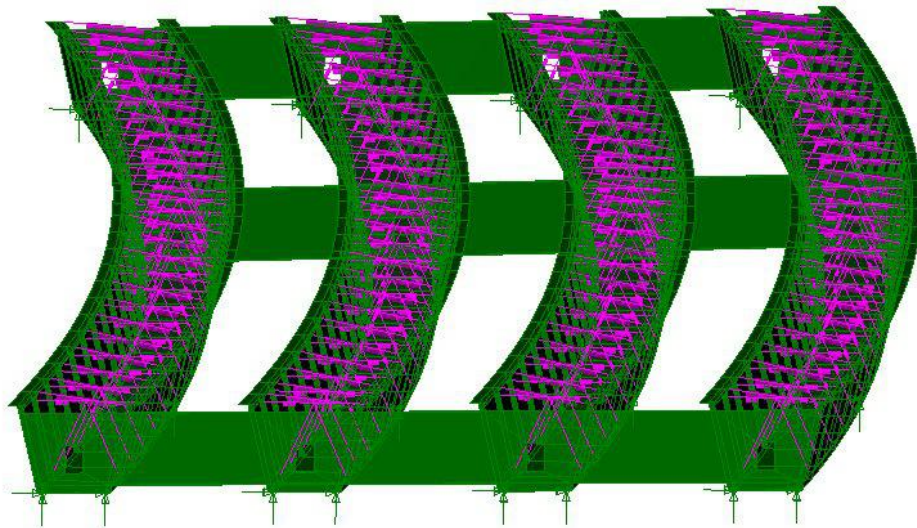
Interchange Bridges, Road 431



Mustafa Inan Viaduct

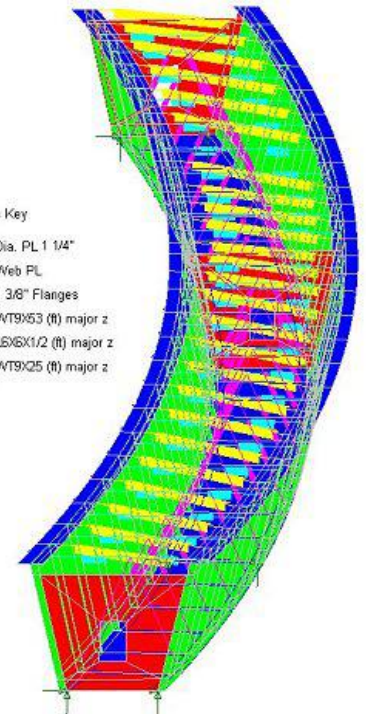


Estero Parkway

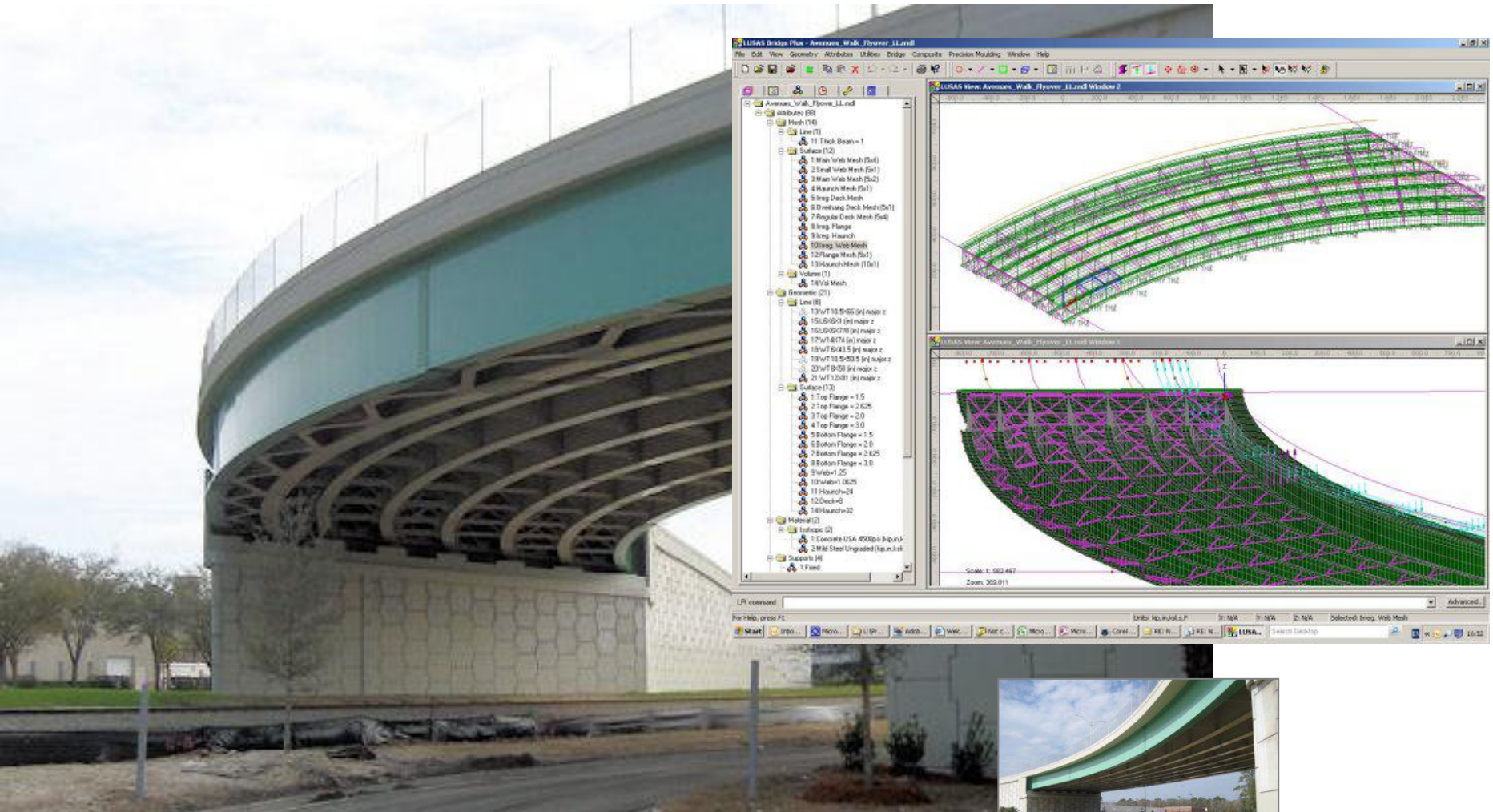


Geometric Key

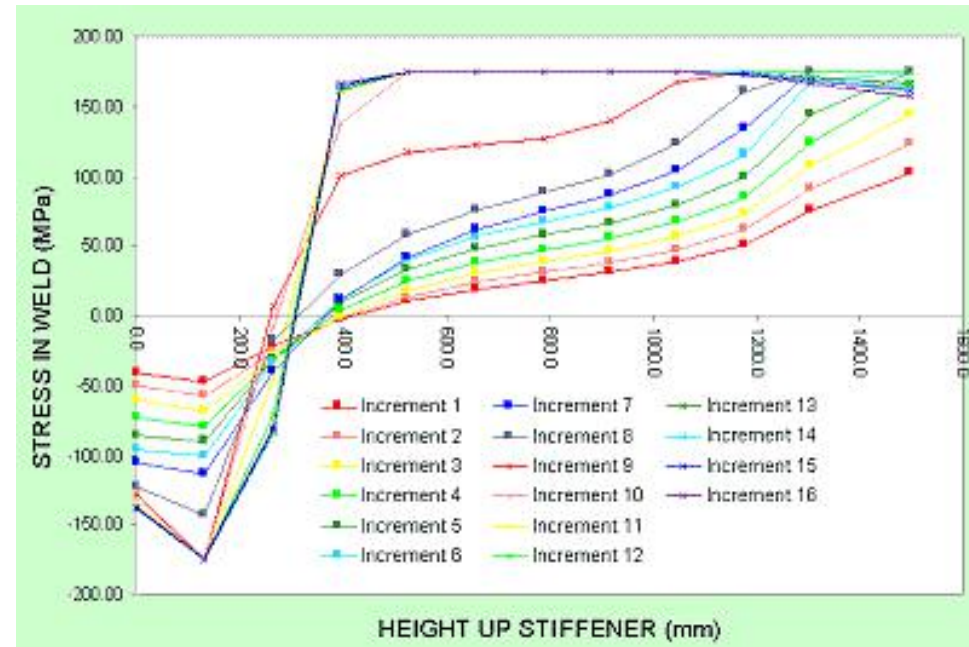
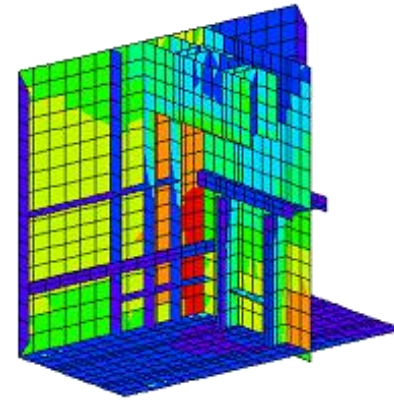
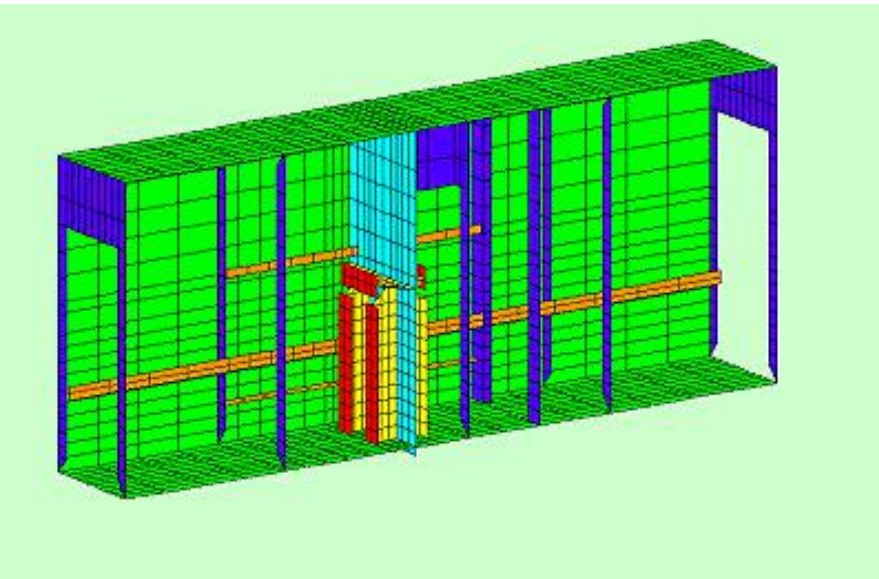
- Dia. PL 1 1/4"
- Web PL
- 1 3/8" Flanges
- WT9x53 (ft) major z
- L6x6x1/2 (ft) major z
- WT9x25 (ft) major z



Avenues Walk Flyover

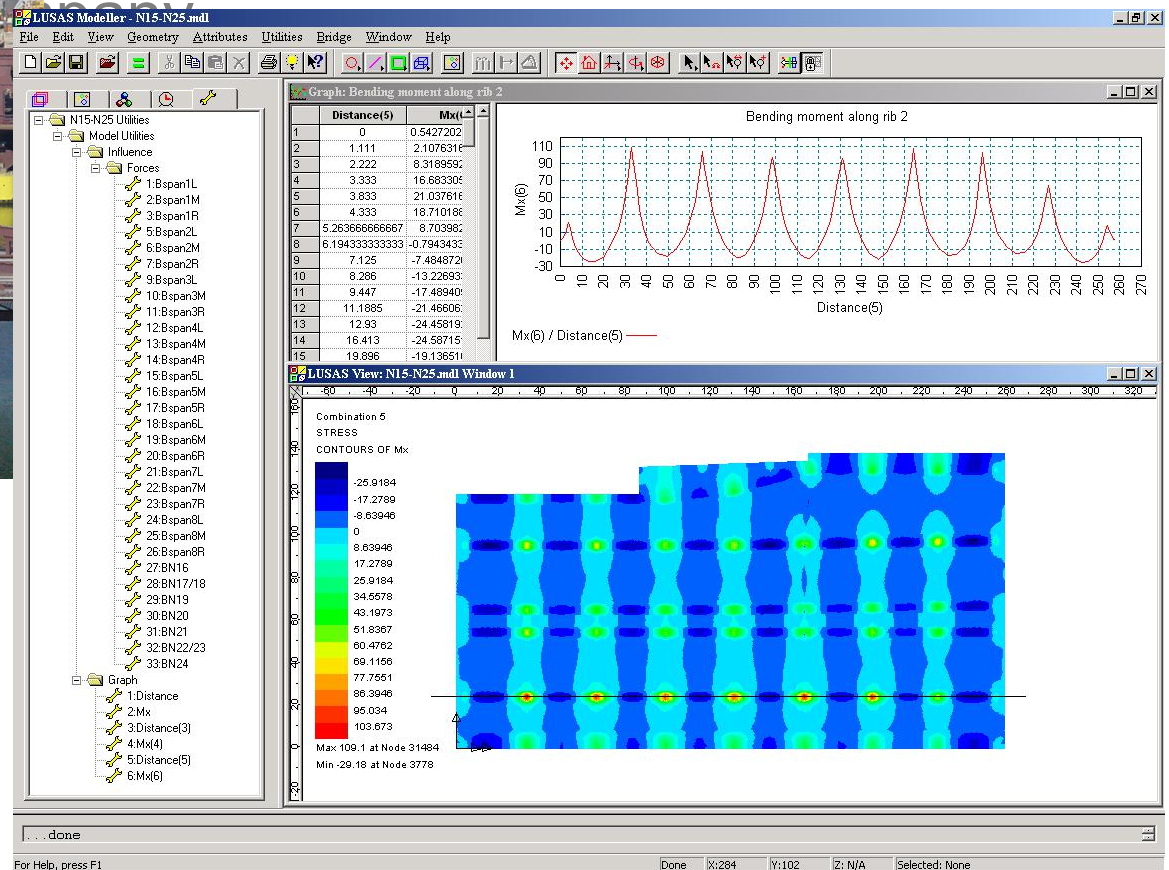
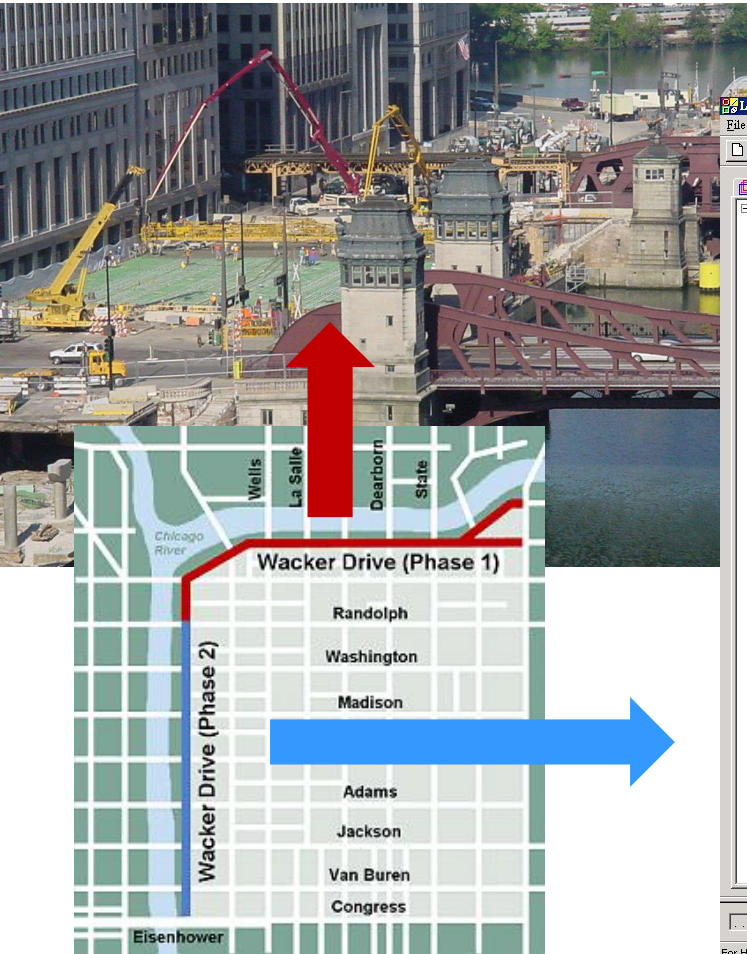


Box Diaphragm Assessments



Wacker Drive

Phase 2 Reconstruction



Integral Abutment Bridges



Roding Bridge



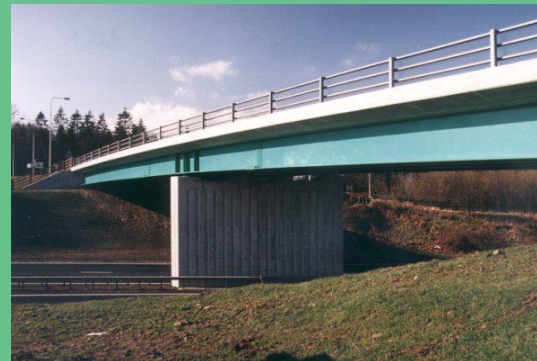
Whitacre Bridge



Brockhampton Road Bridge



River Roe Bridge

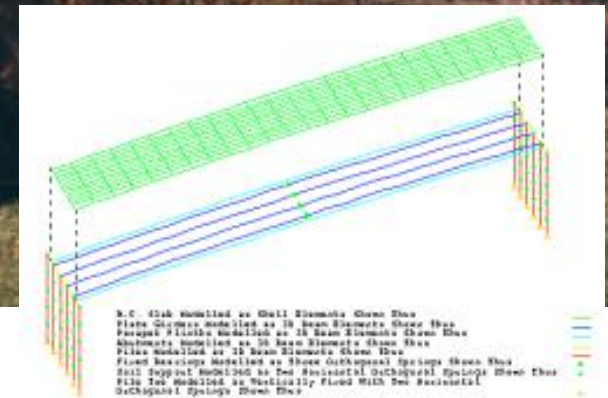


Blagdon Bridge

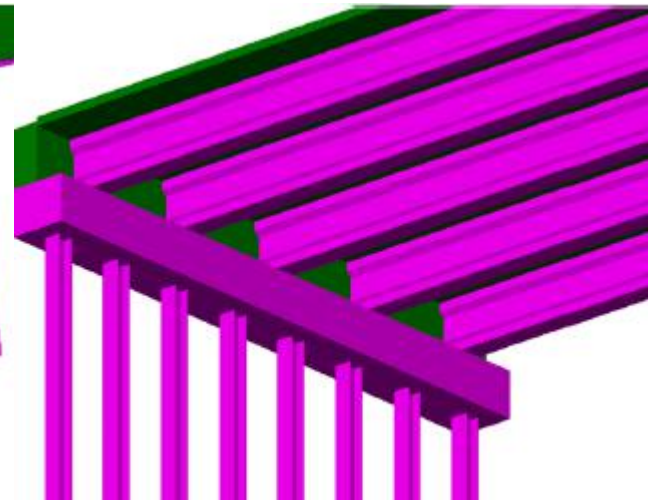
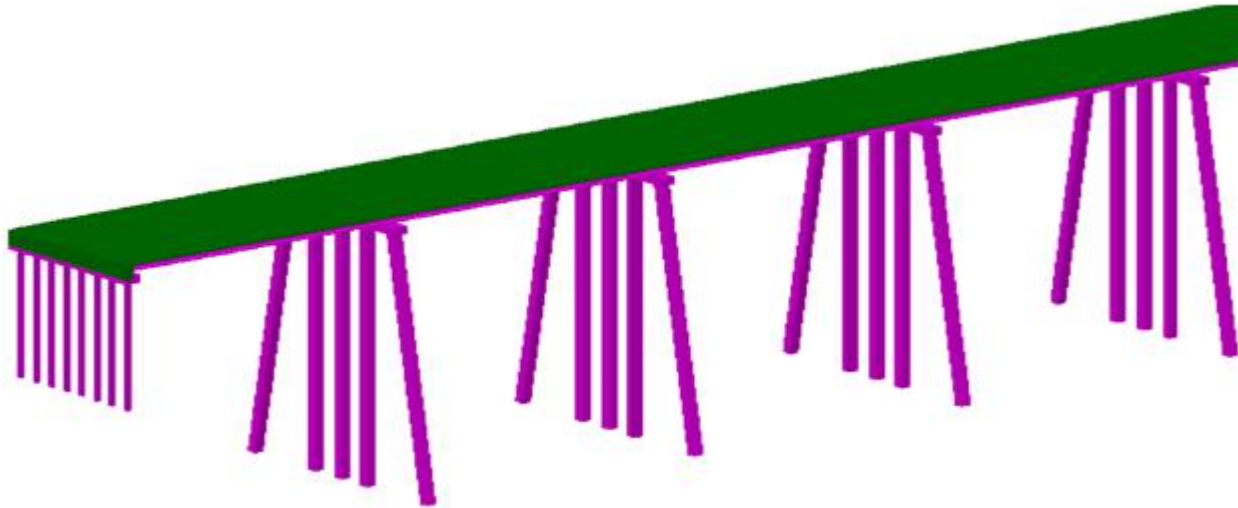


Dowlands Road Bridge

North Shotton Overbridge

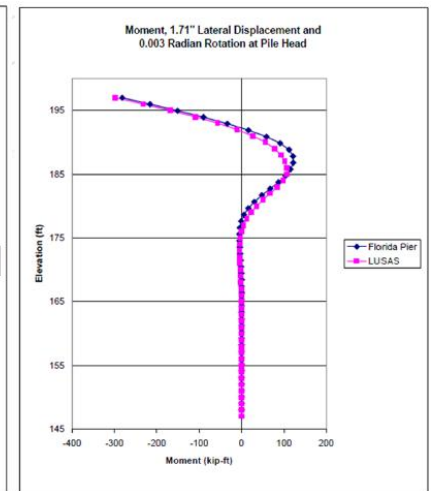
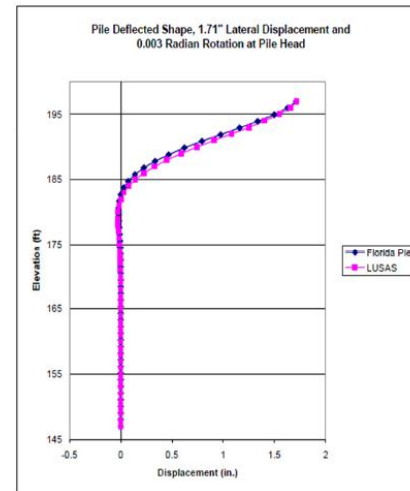
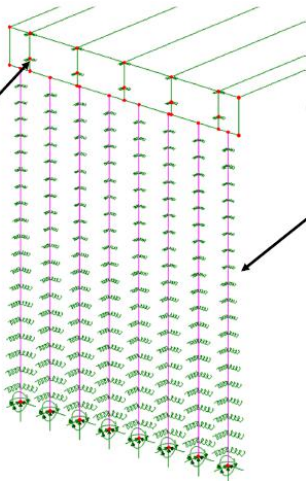


Bodcau Bayou

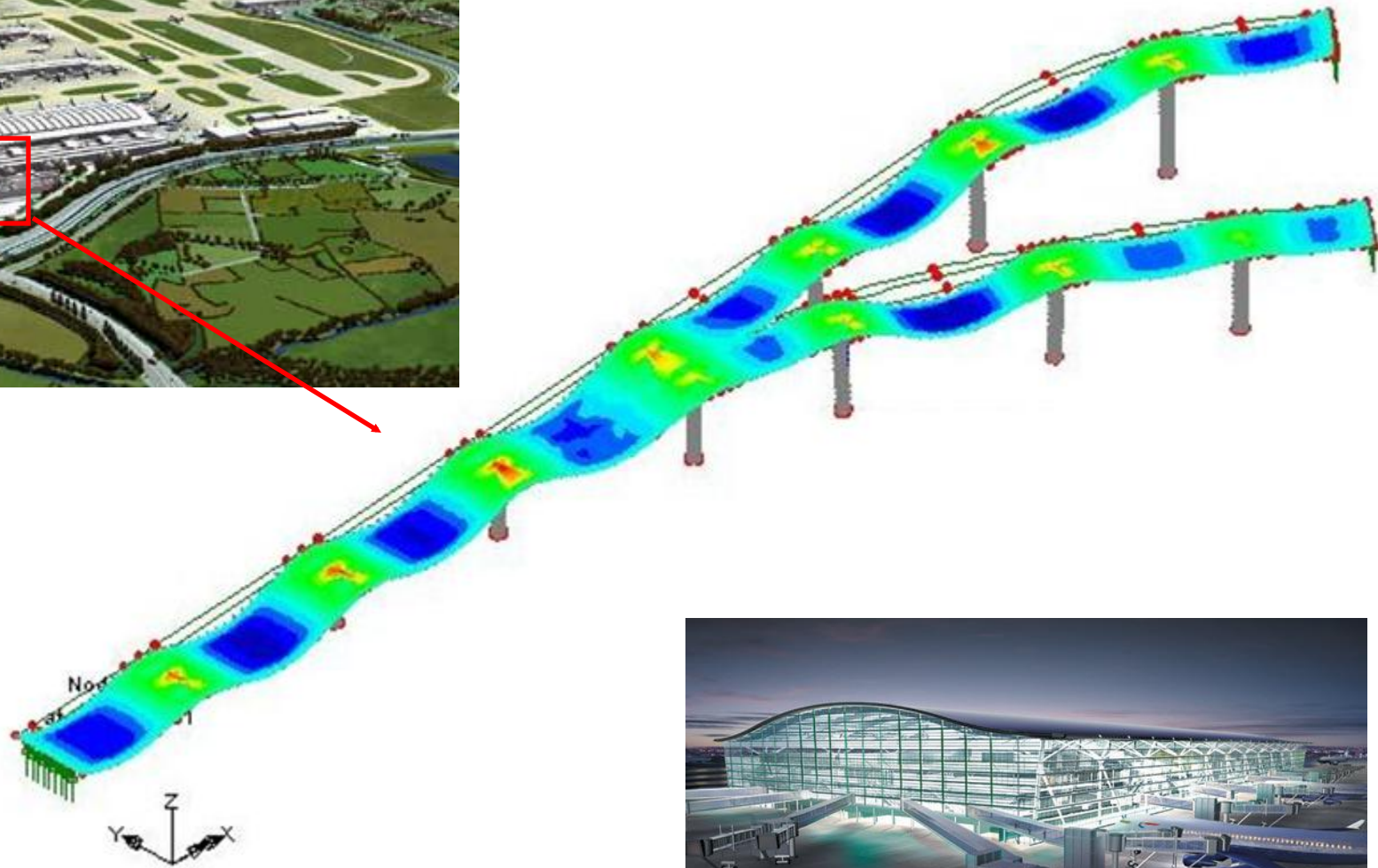
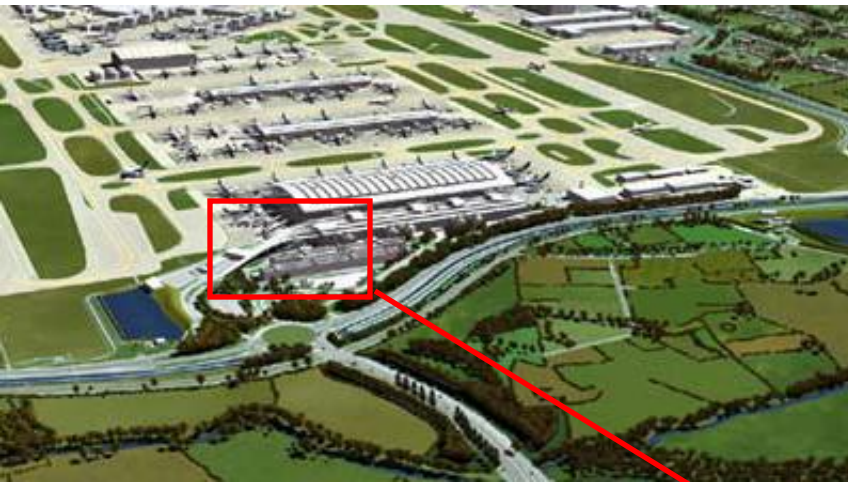


Springs
representing
abutment
backfill pressure

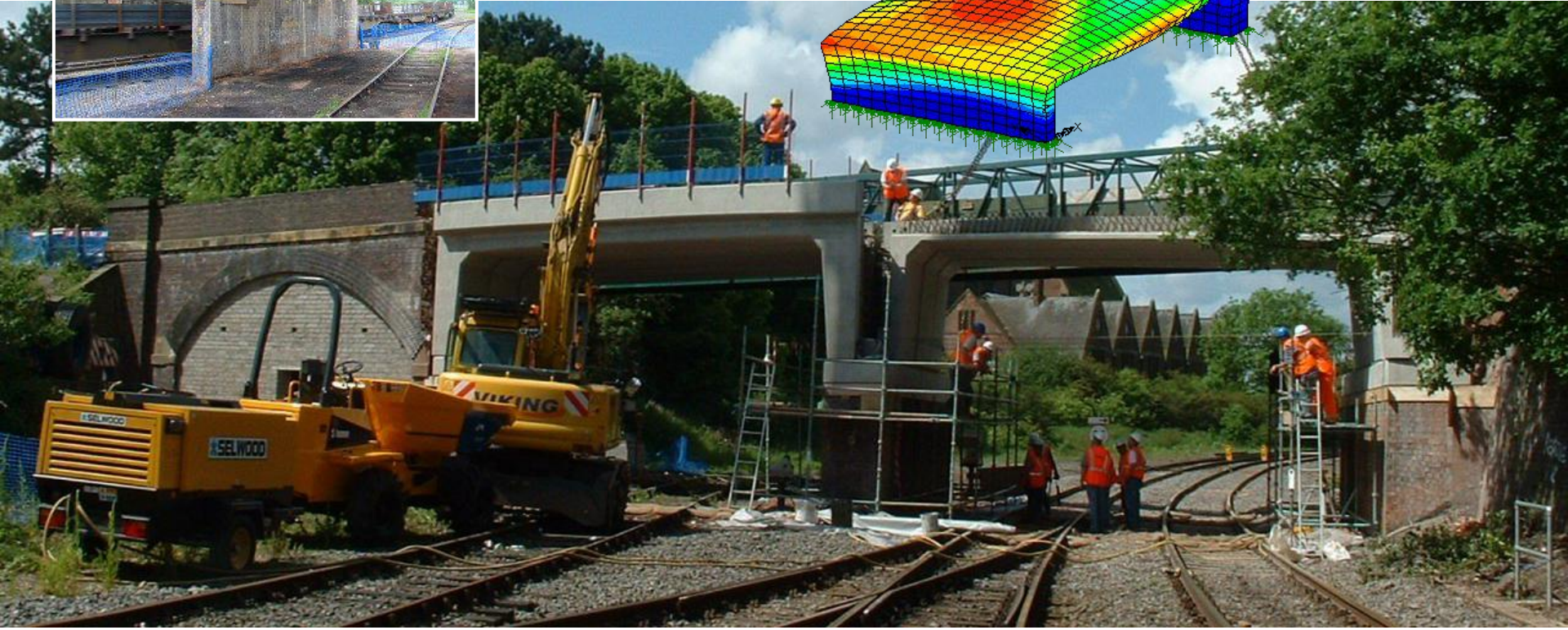
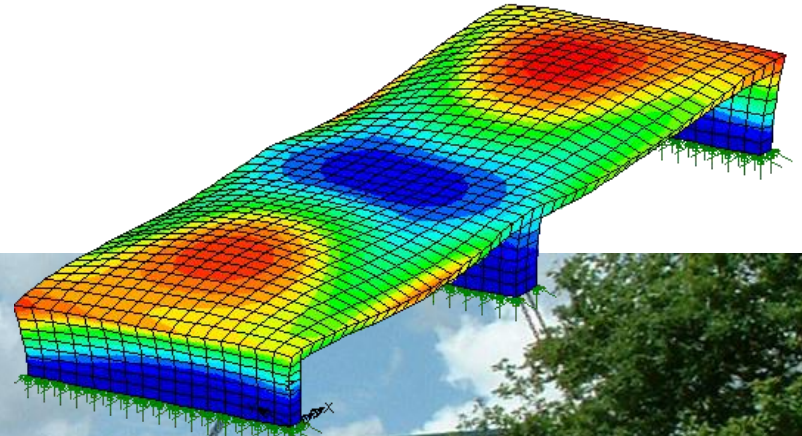
H-pile equivalent
linear spring
stiffness varying
with depth



Ramps, Terminal 5 Heathrow



Whitacre Bridge





DART Blue line extension



Glasgow Station upgrade



Dubai Metro Red + Green Lines



Honan High Speed Railway

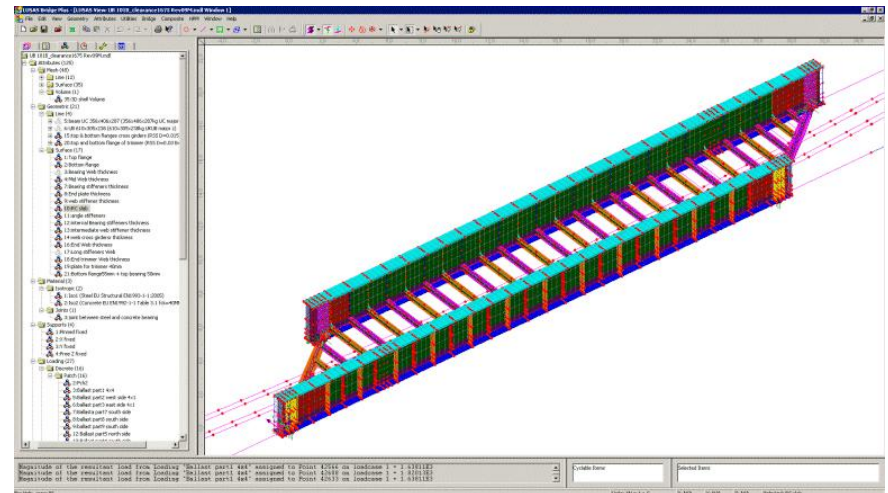
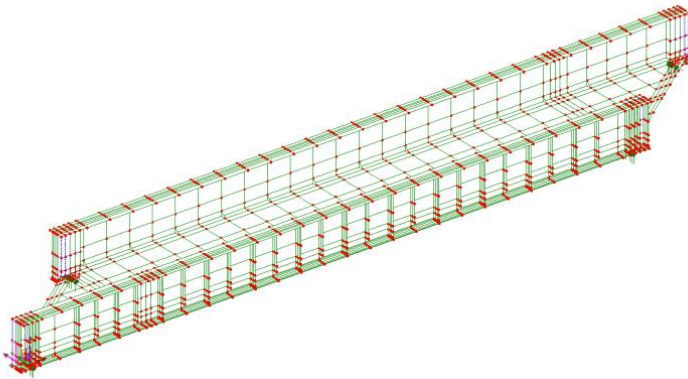
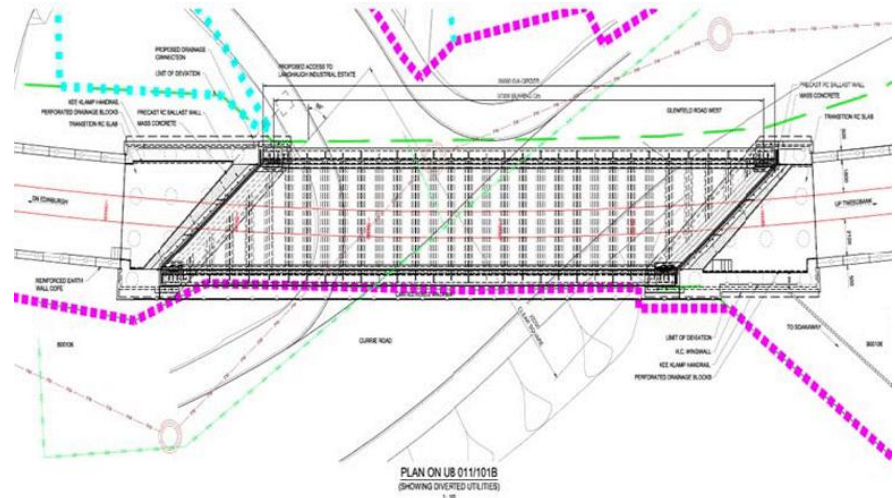


Taiwan High Speed Rail Link



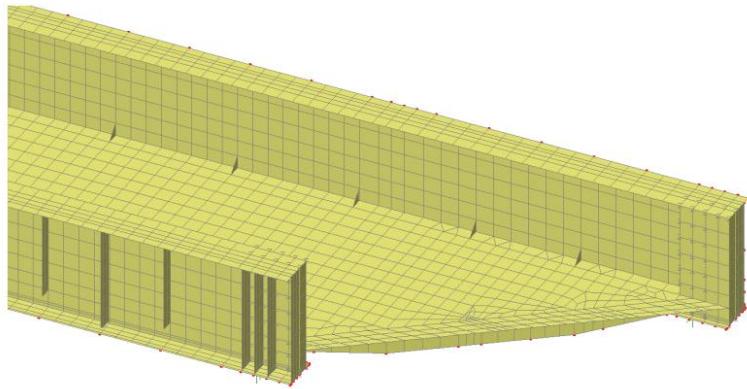
Newark Dyke Bridge

Currie Road Bridge

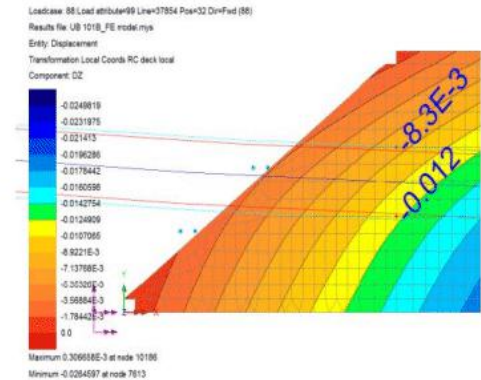
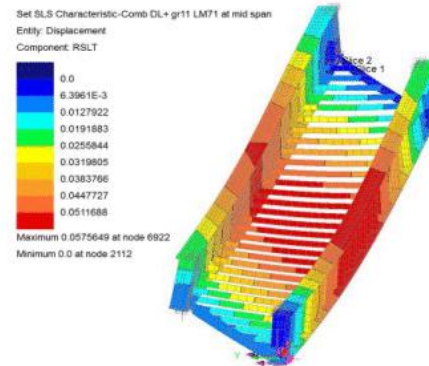


Atkins Rail

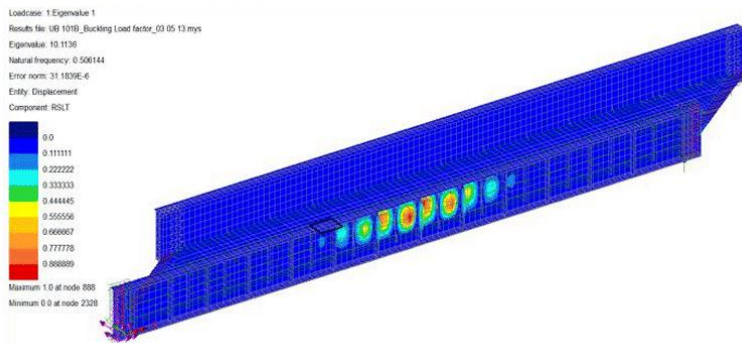
Currie Road Bridge



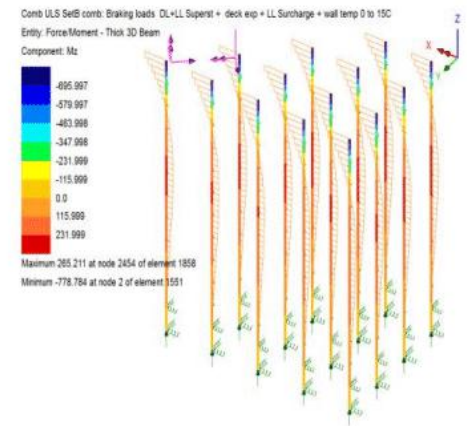
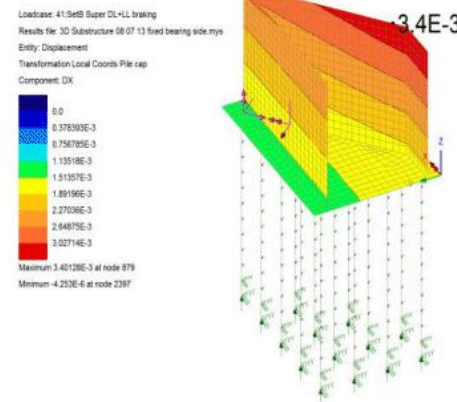
Detail of meshing showing end trimmer beam



Displacement contour plots for particular design combinations

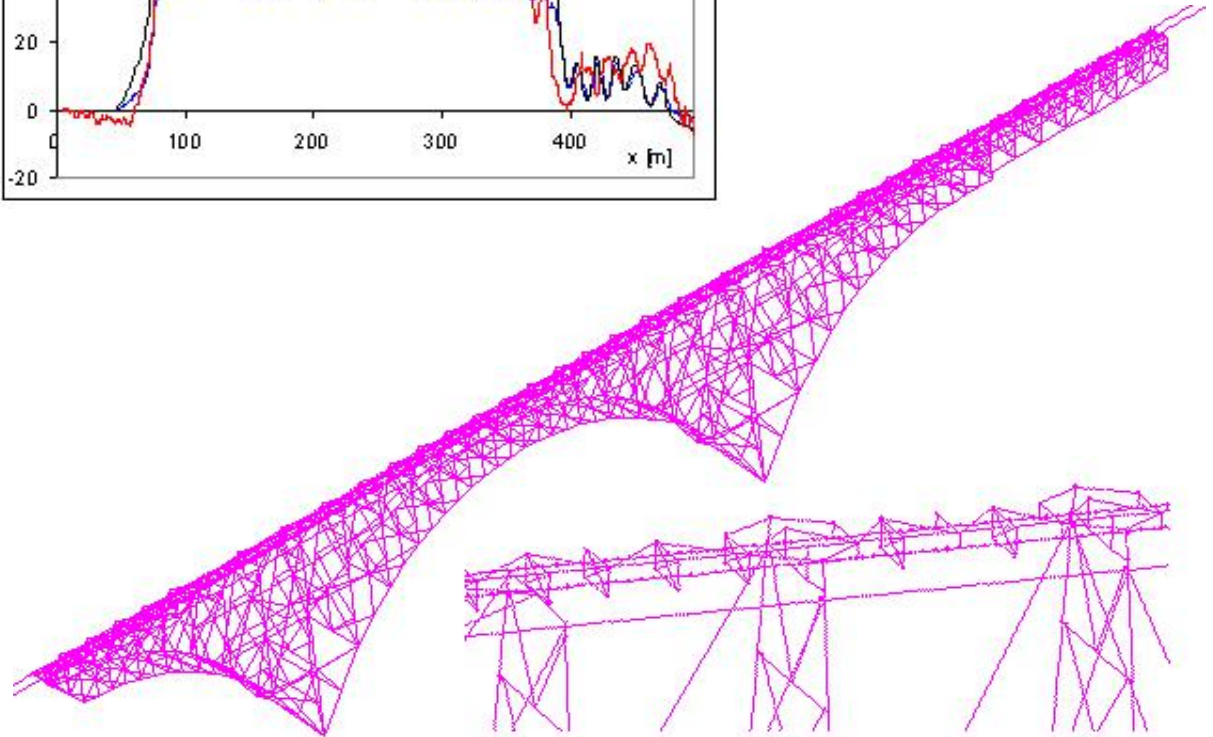
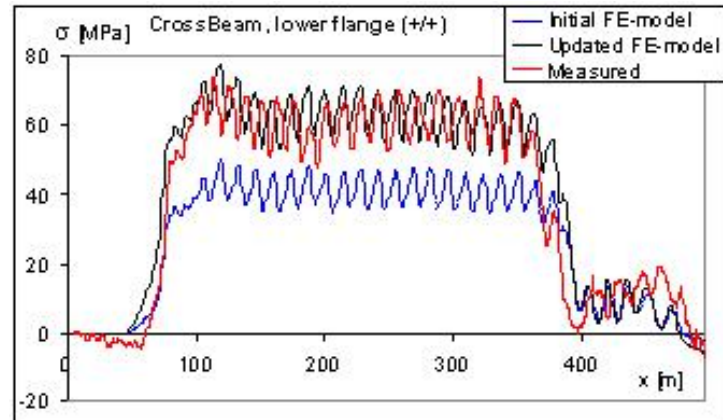
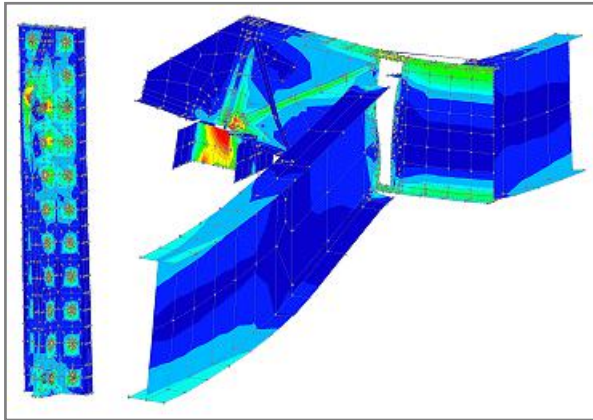


Load factor modelling

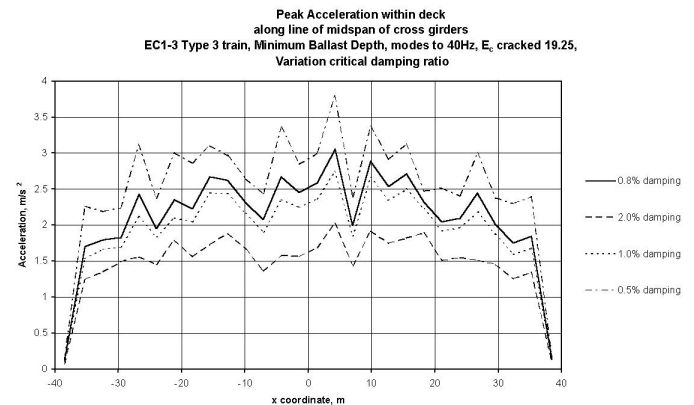
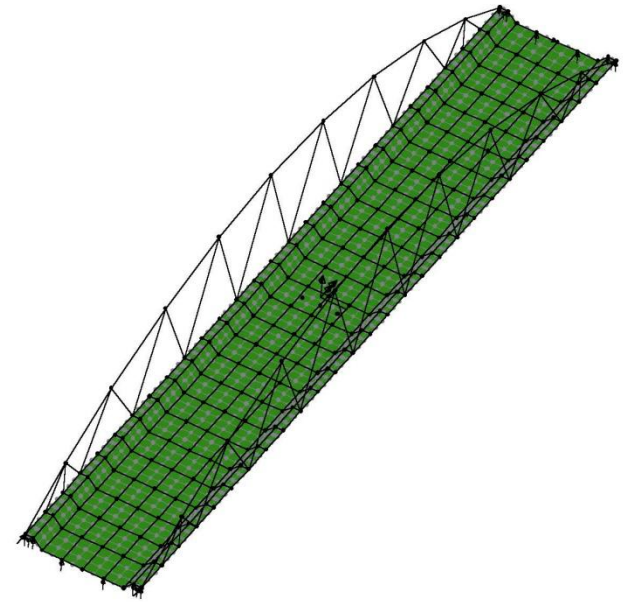


Substructure modelling showing displacements due to train braking loads

Forsmo Bridge



Newark High Speed Rail Bridge



Automated Design of Railway Culverts

GEOMETRIA SEZIONE

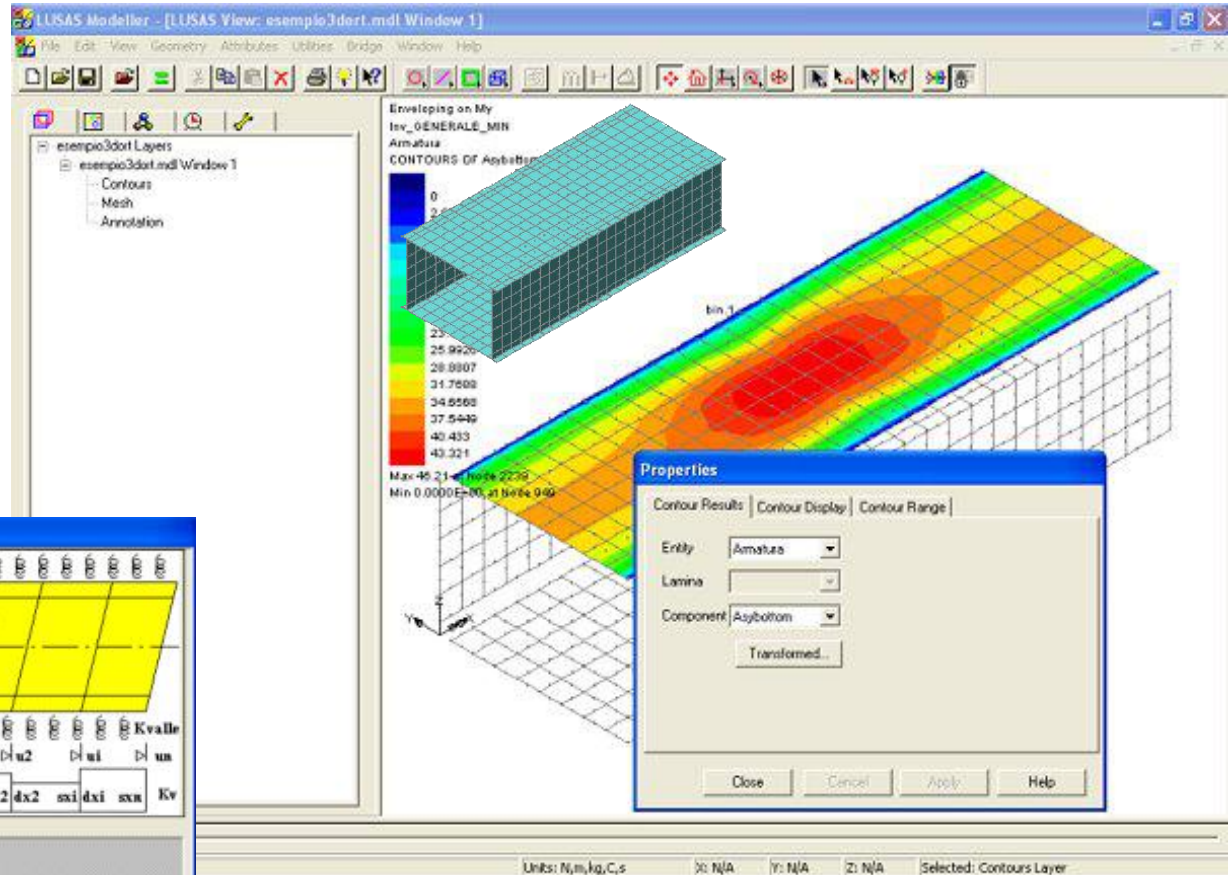
Ln = 9	Ss = 11
Hn = 6.1	Li = 0
Br = 0	Sr = 0.5
Sp = 1.1	Hr = 2.04
Sf = 1.1	Hb = 0.8

☒ Falda ☐ Canale

Zvee = 475 Huv = 0

AVVISI:

<<INDIETRO AVANTI>> ANNULLA



Materiali e Rigidezze

E = 34000000000 ν = 0.2

k0 = 0.5

Yacco = 20000 Ysteno = 11000

Yaliso = 10000 Yaliso = 20000

k_monte = 0 k_valle = 0

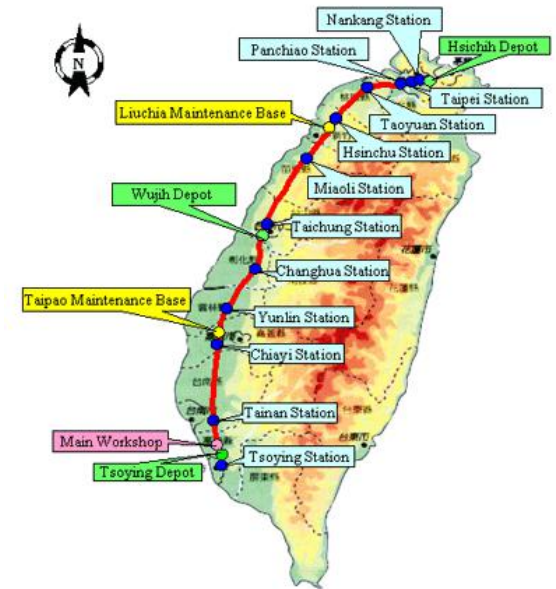
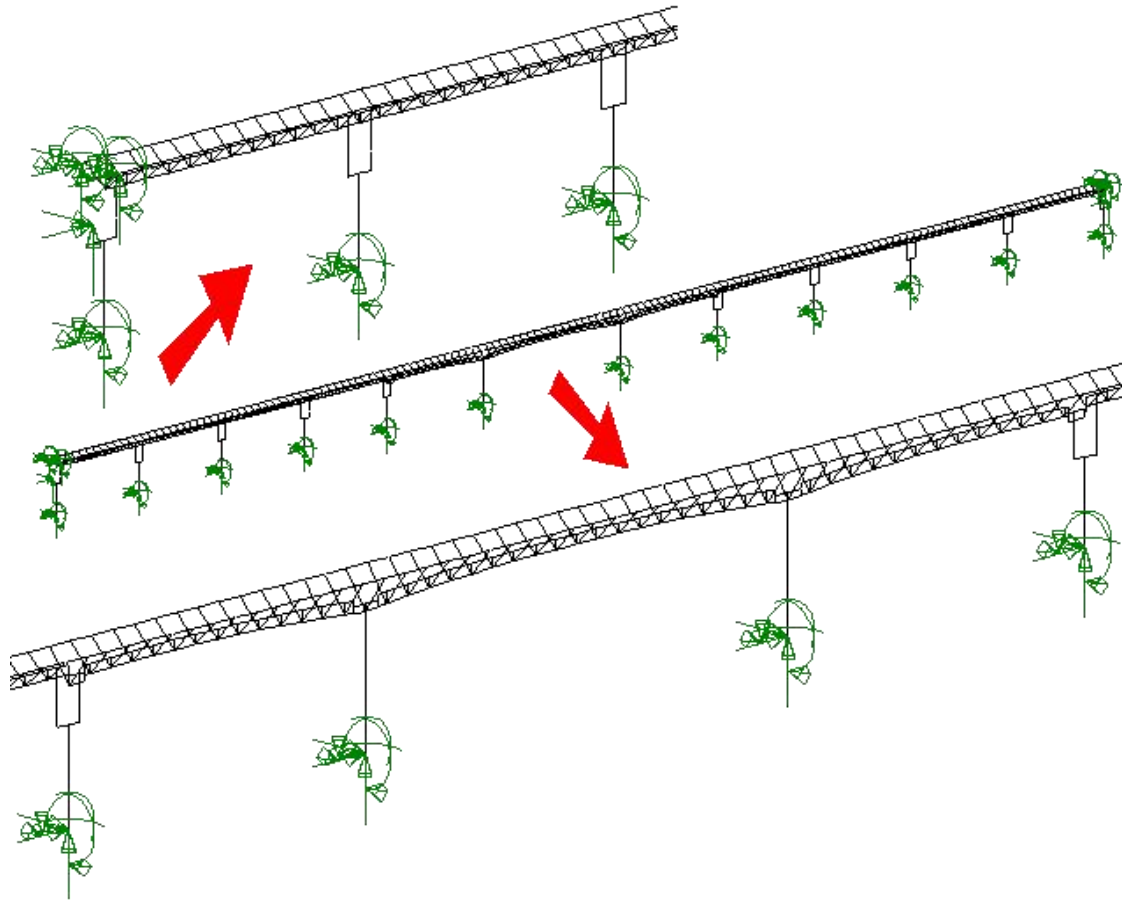
tipologie terreno: ☒ UI Param

UI Kw

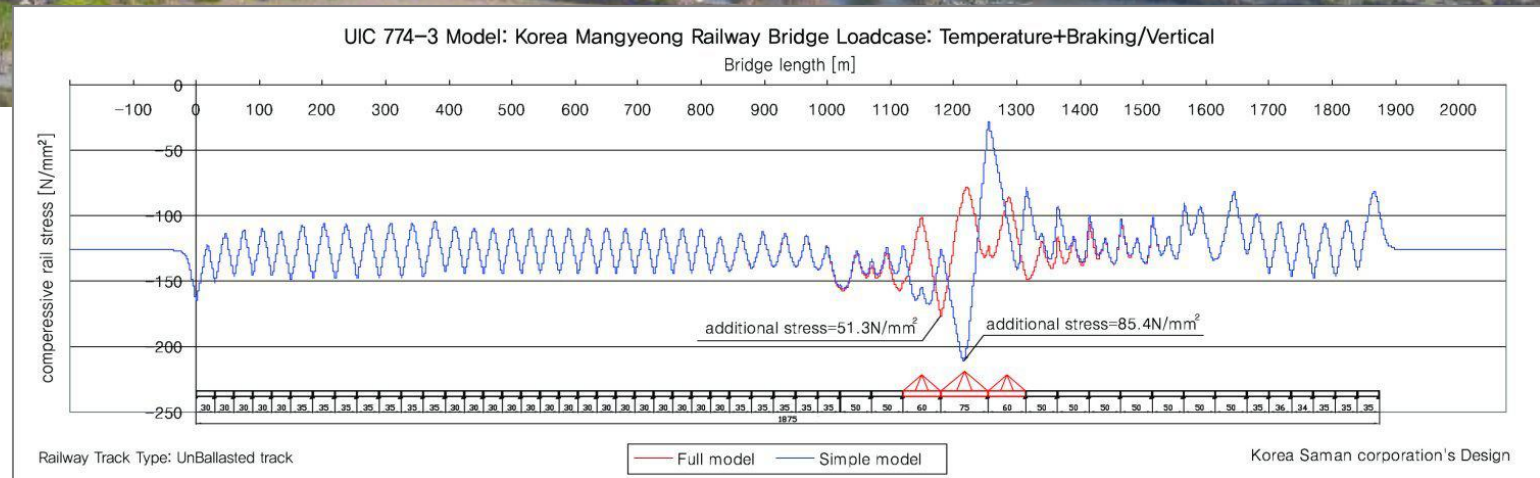
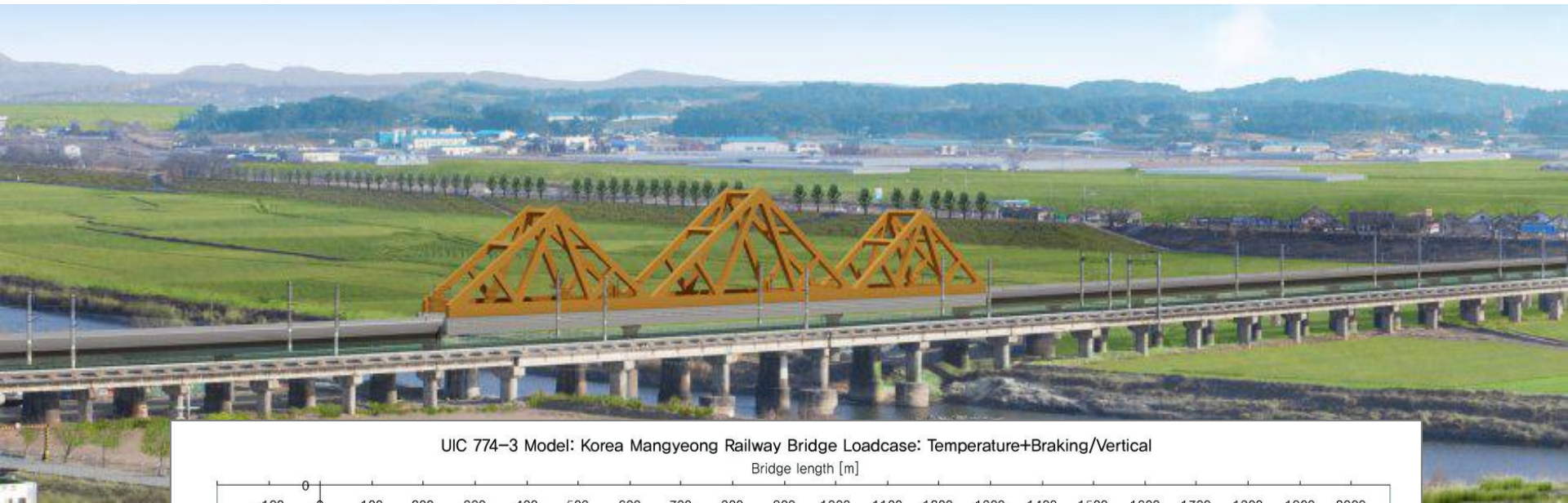
AVVISI:

<<INDIETRO AVANTI>> ANNULLA

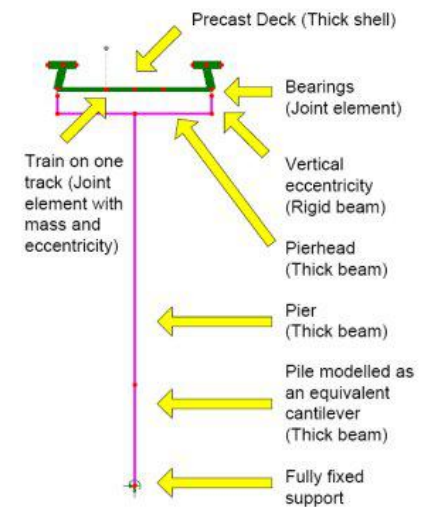
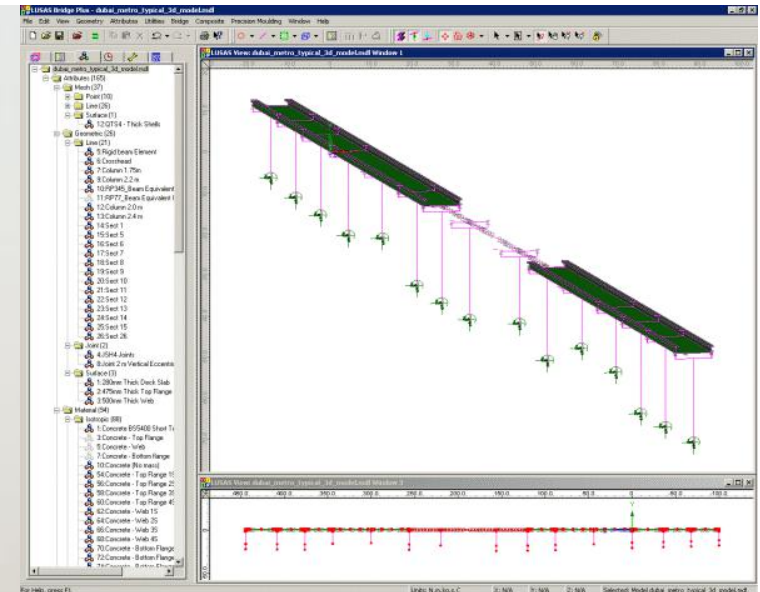
Taiwan High Speed Rail Project



Honam High Speed Rail Bridge



Dubai Metro - Red and Green Lines



DART Light Rail Bridges





Dawlish station footbridge



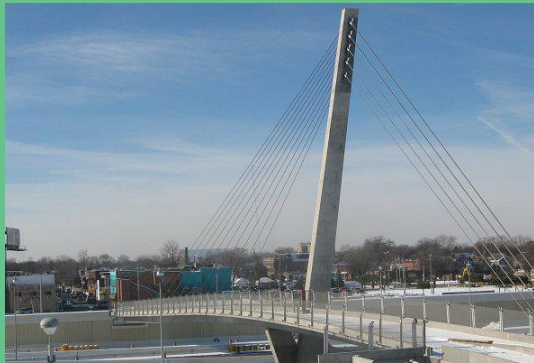
London Olympic Park bridges



Navvies footbridge



Redhayes footbridge

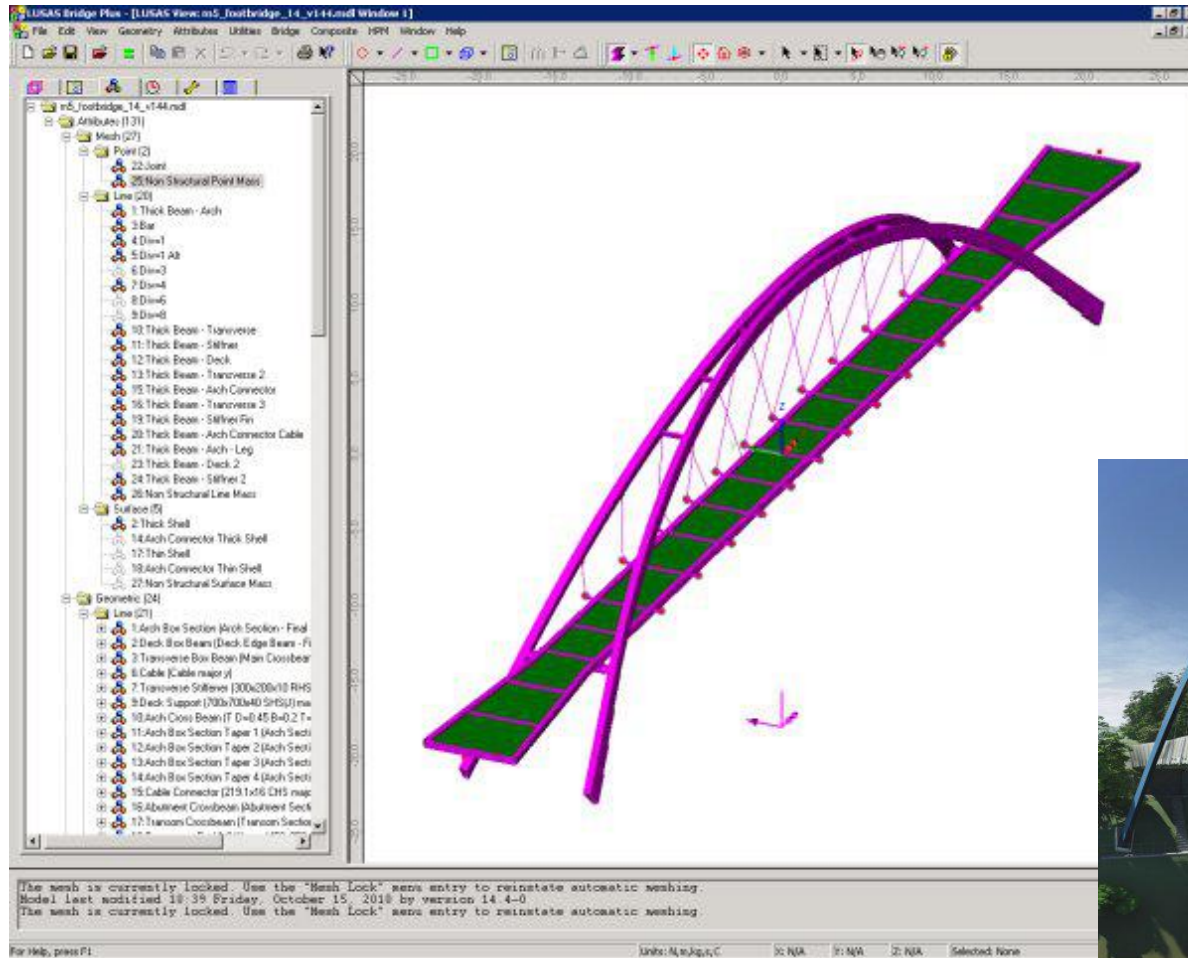


Bagley Street footbridge



Baker Bridge

Redhayes Bridge



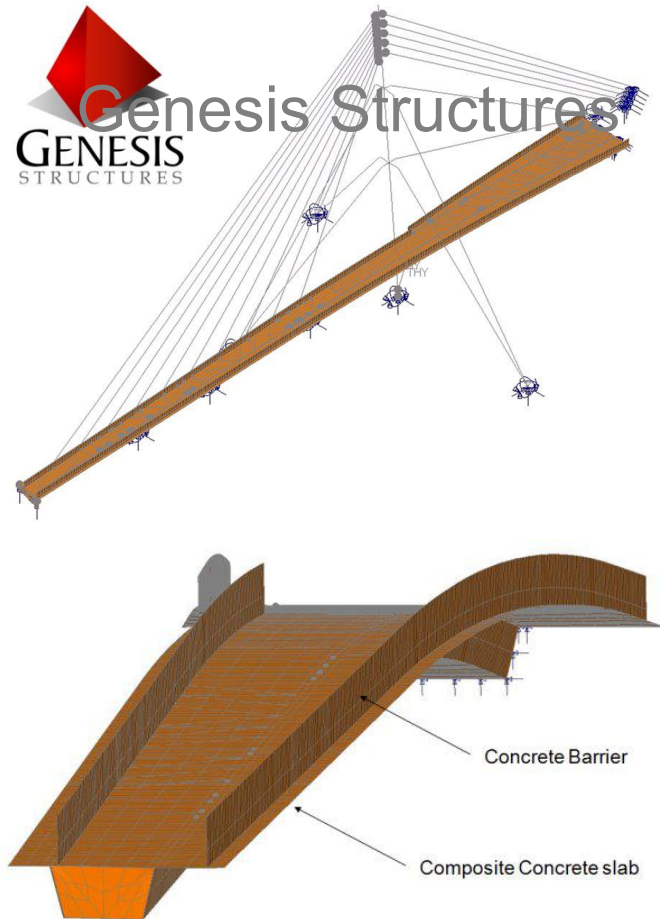
Redhayes Bridge



Redhayes Bridge



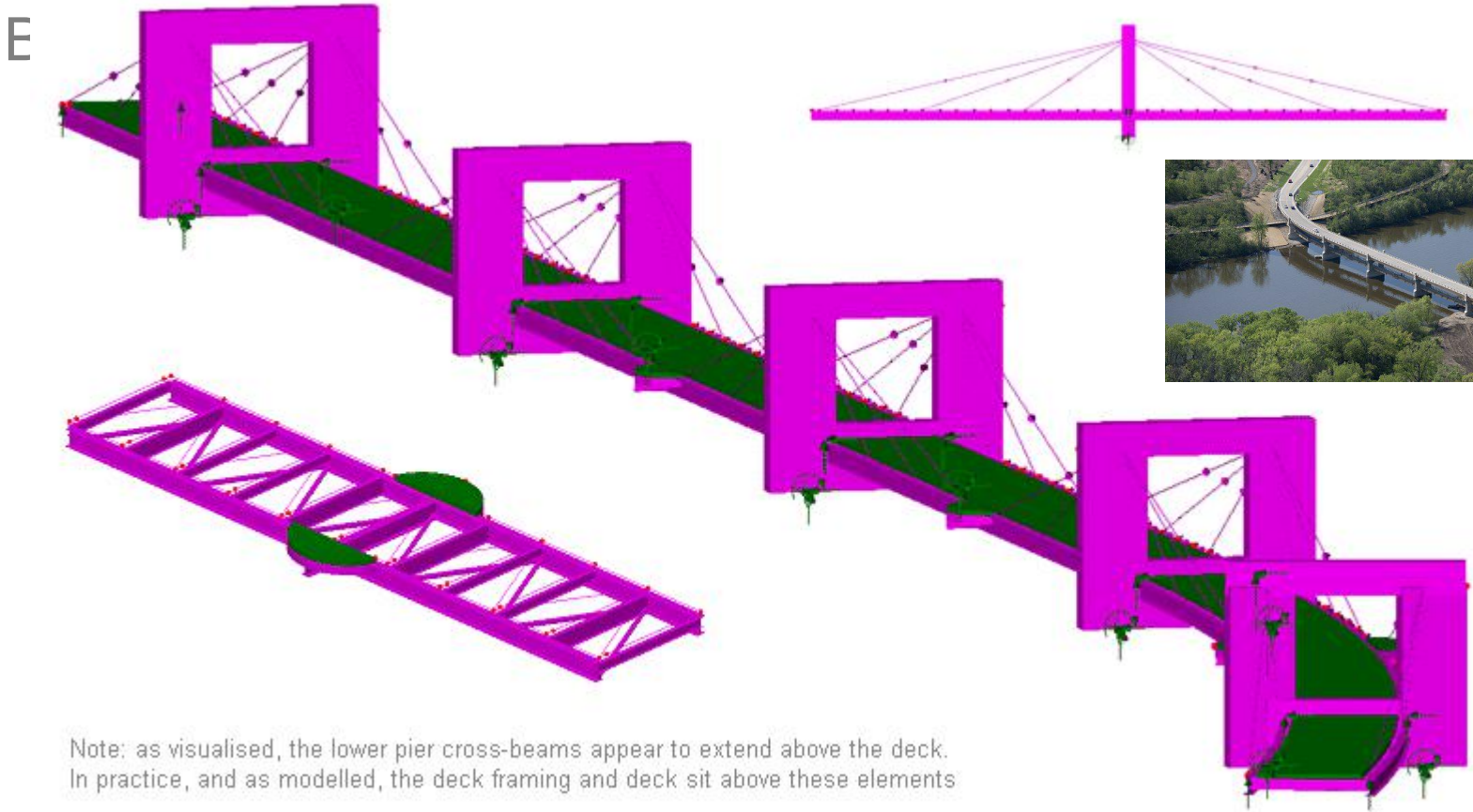
Bagley Street Pedestrian Bridge



Red Gate Pedestrian Bridge

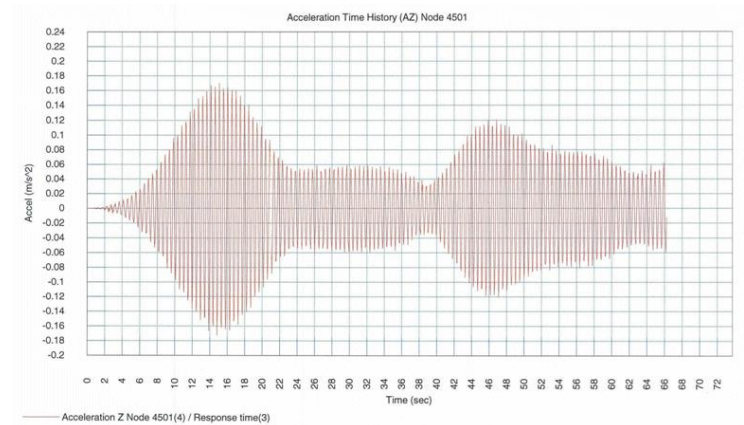
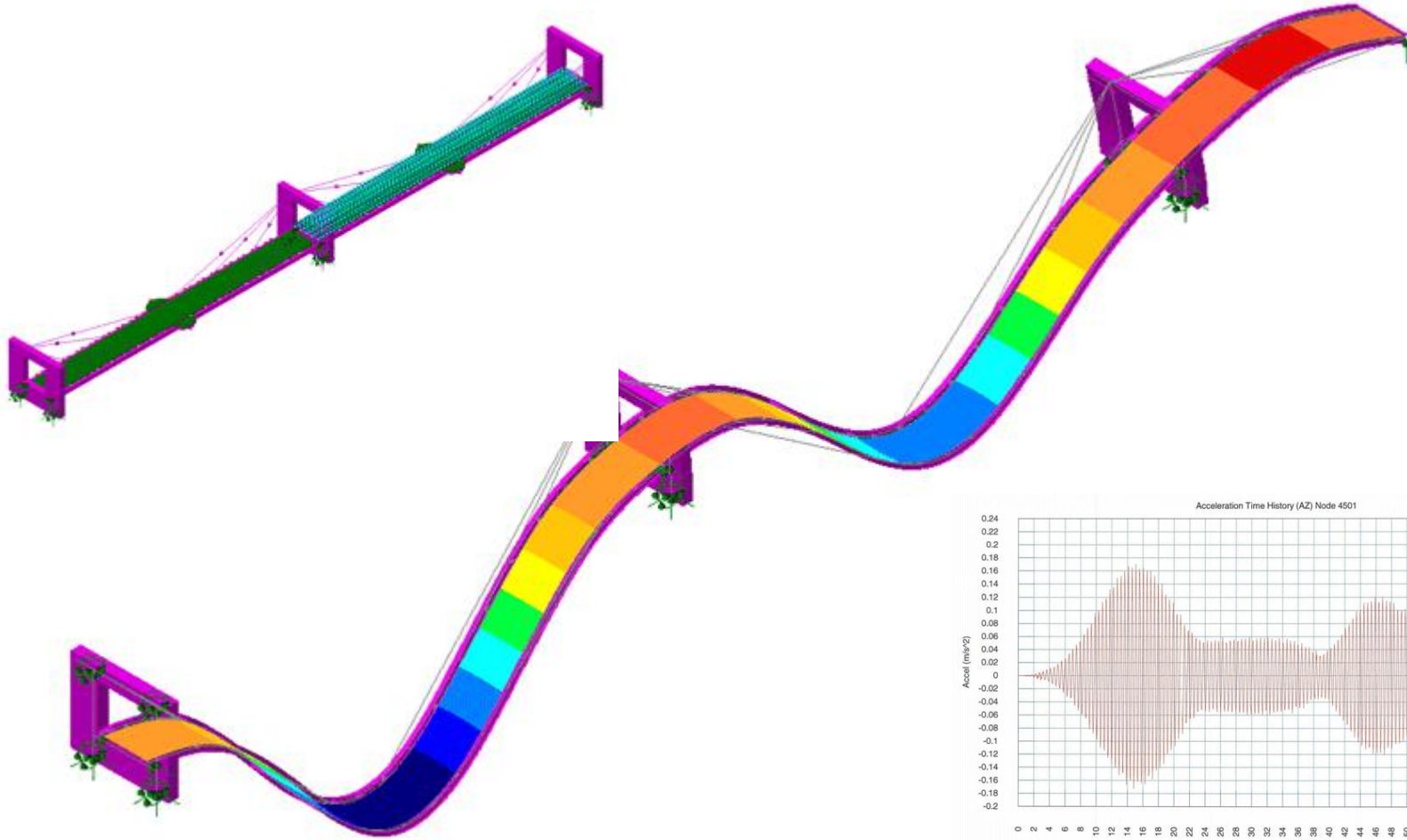


Red Gate Pedestrian Bridge



Note: as visualised, the lower pier cross-beams appear to extend above the deck.
In practice, and as modelled, the deck framing and deck sit above these elements

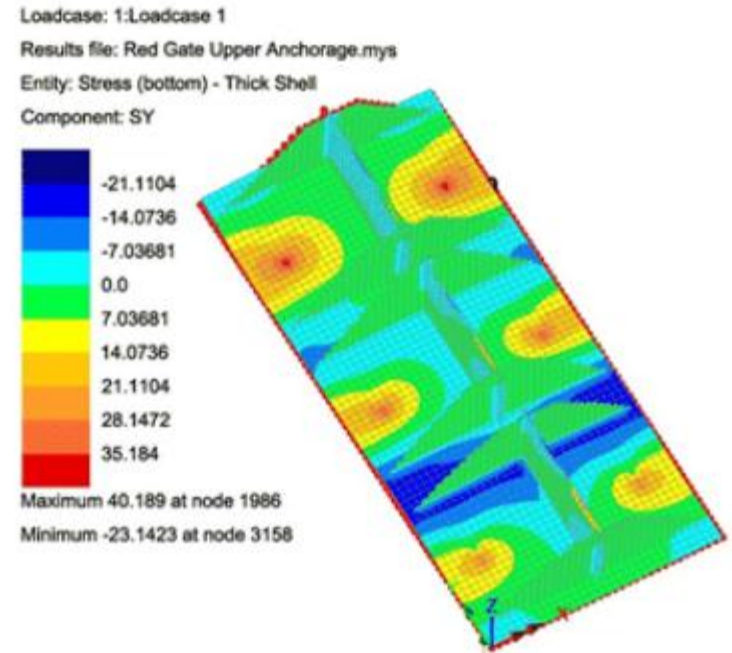
Red Gate Pedestrian Bridge



Red Gate Pedestrian Bridge



Upper and lower cable connection details

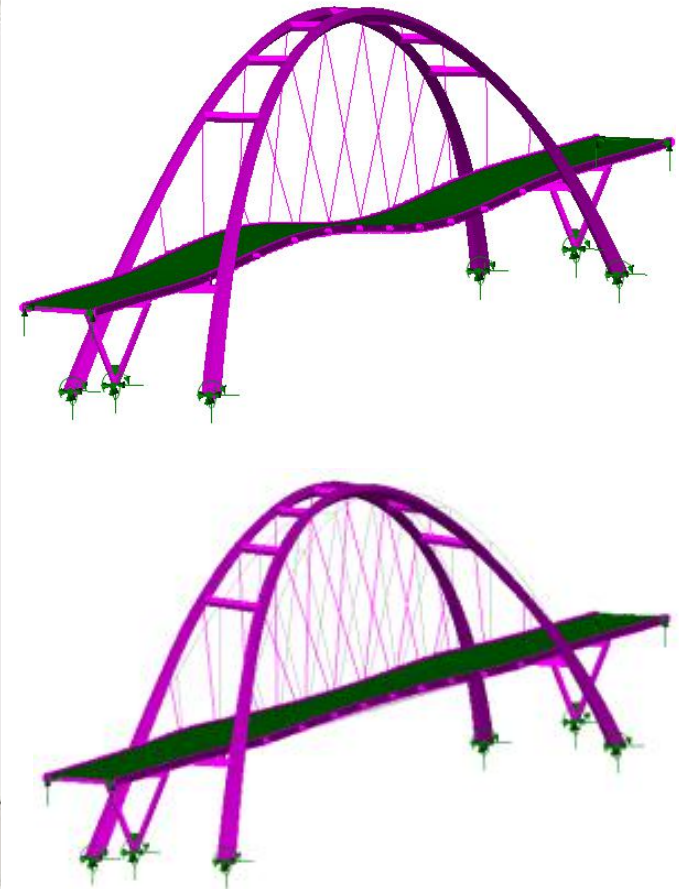
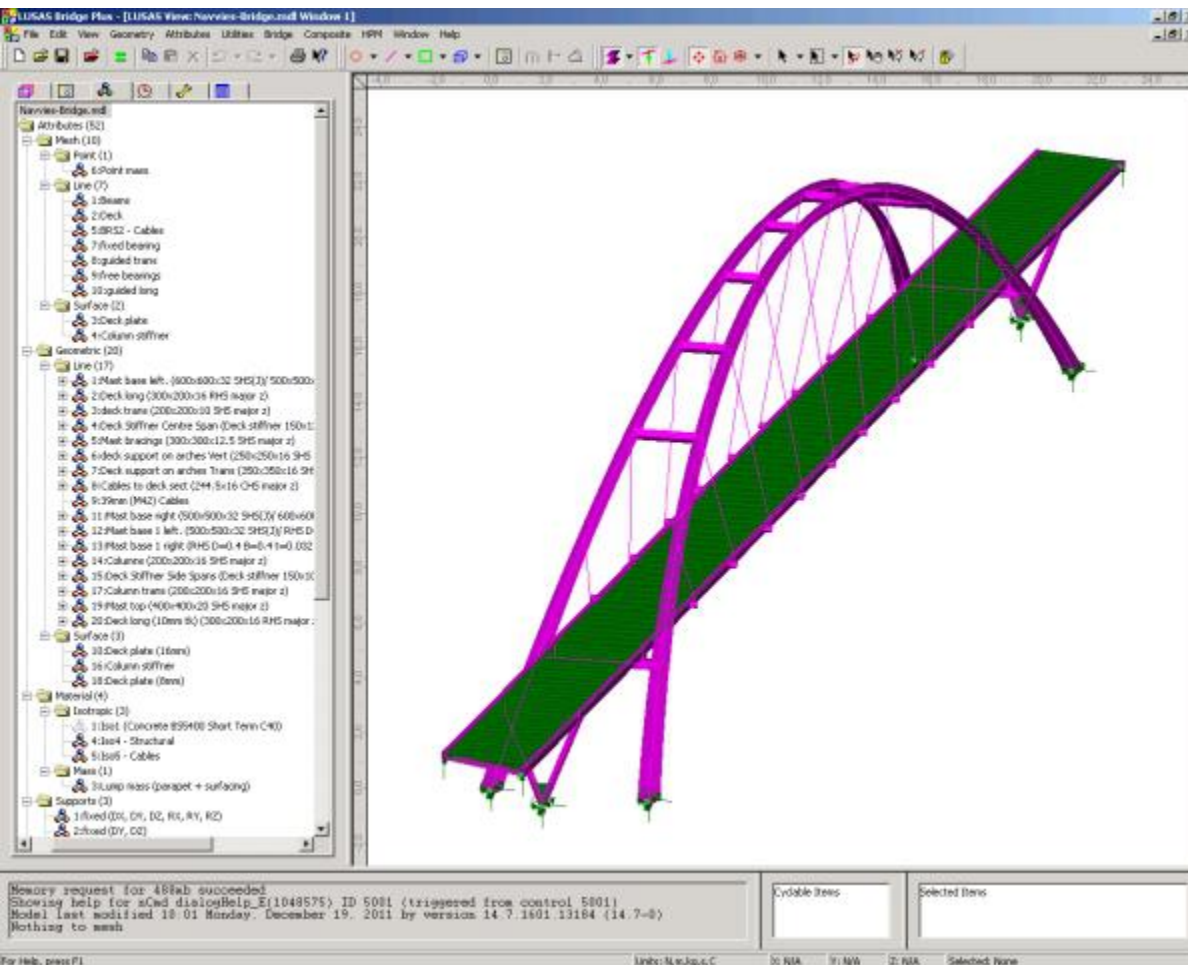


LUSAS model of upper cable connection assembly

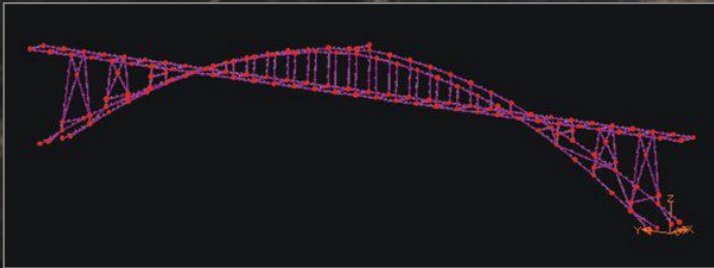
Navvies Bridge



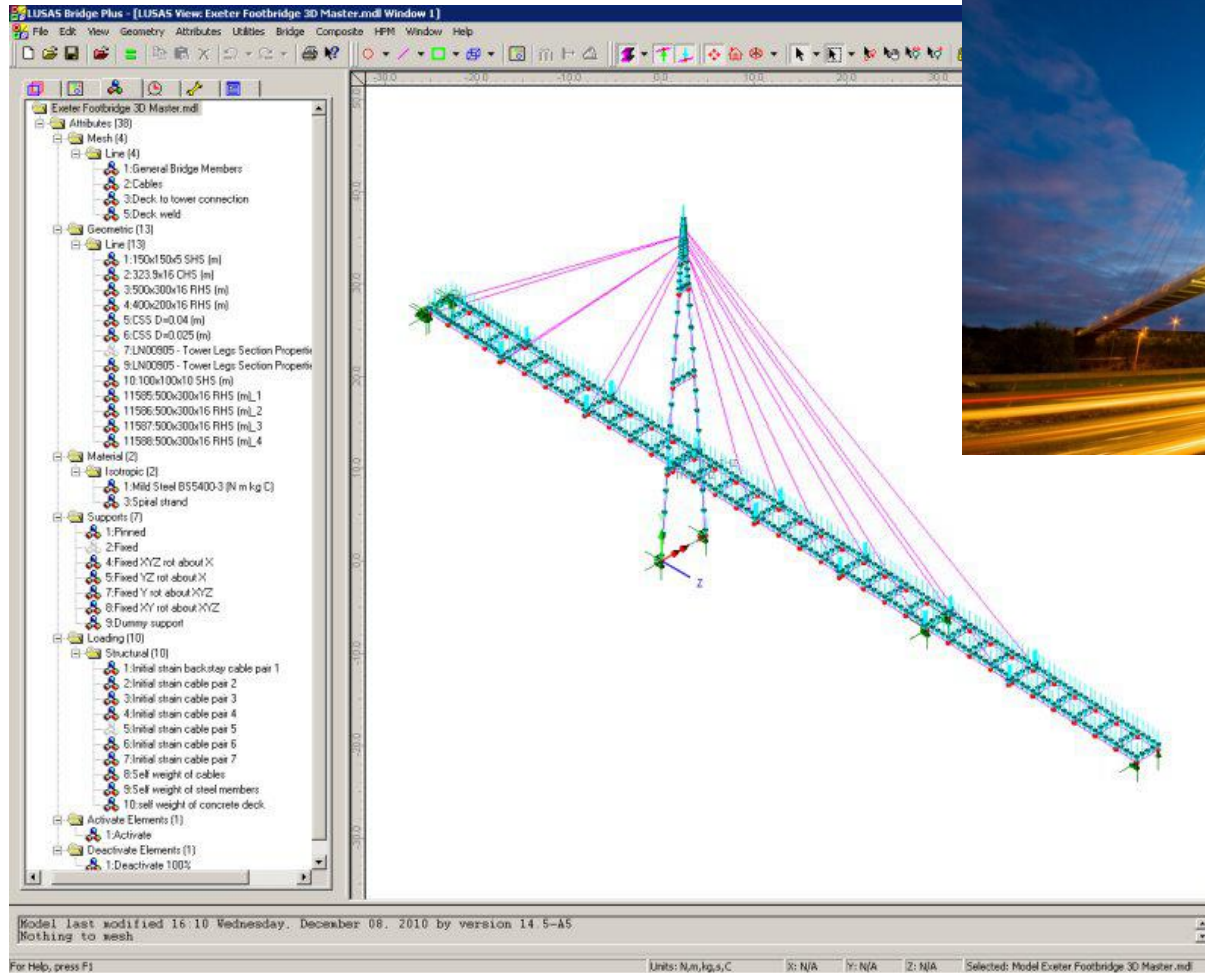
Navvies Bridge



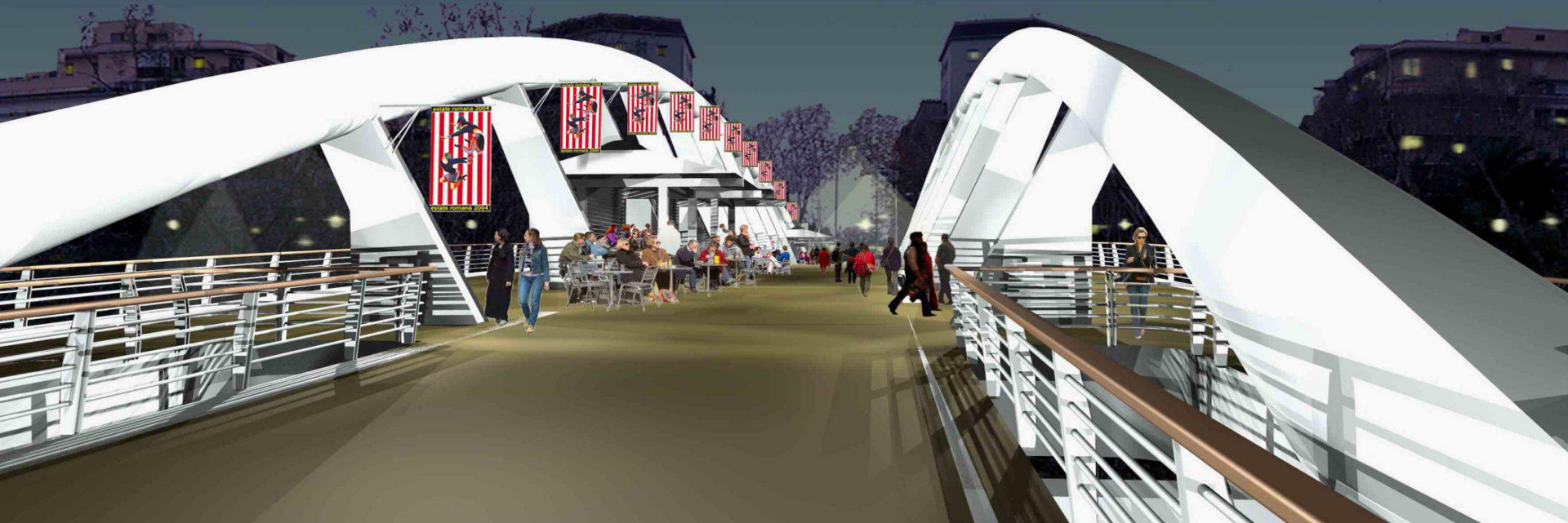
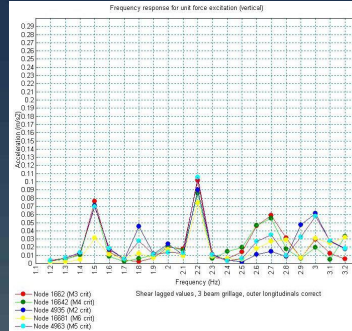
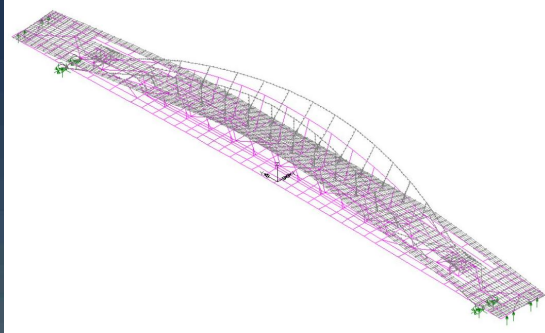
New Mizen Head Footbridge



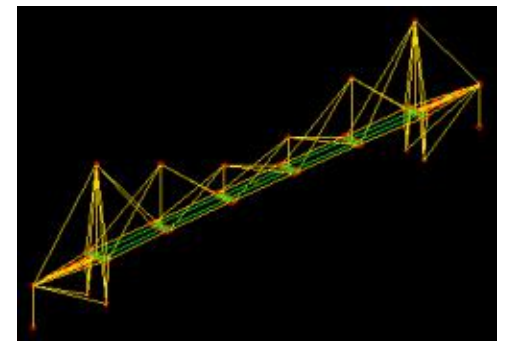
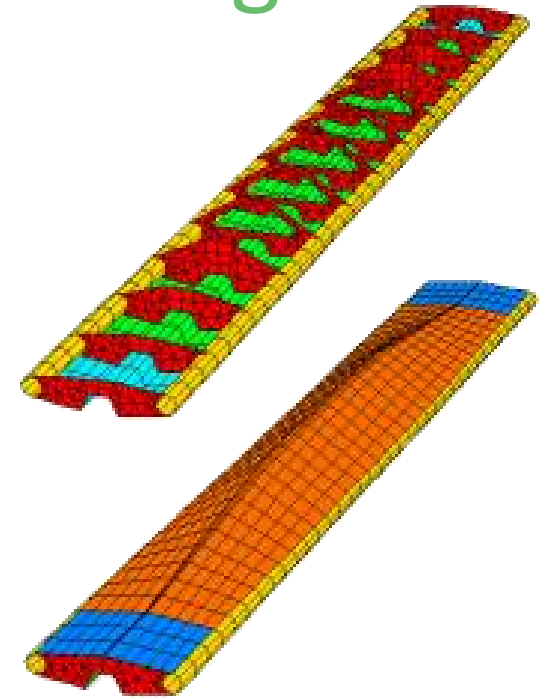
Baker Bridge



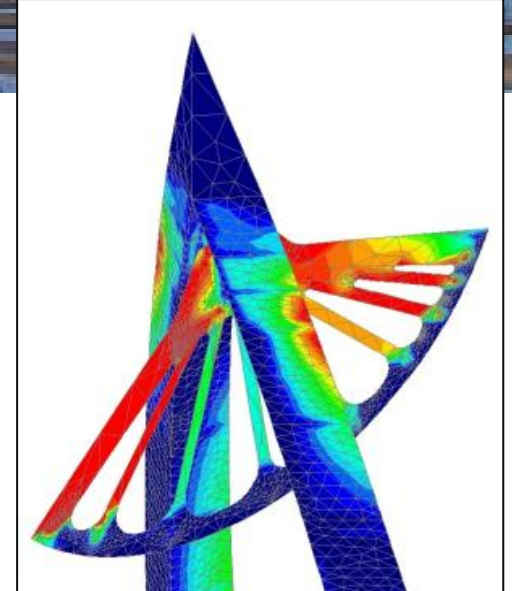
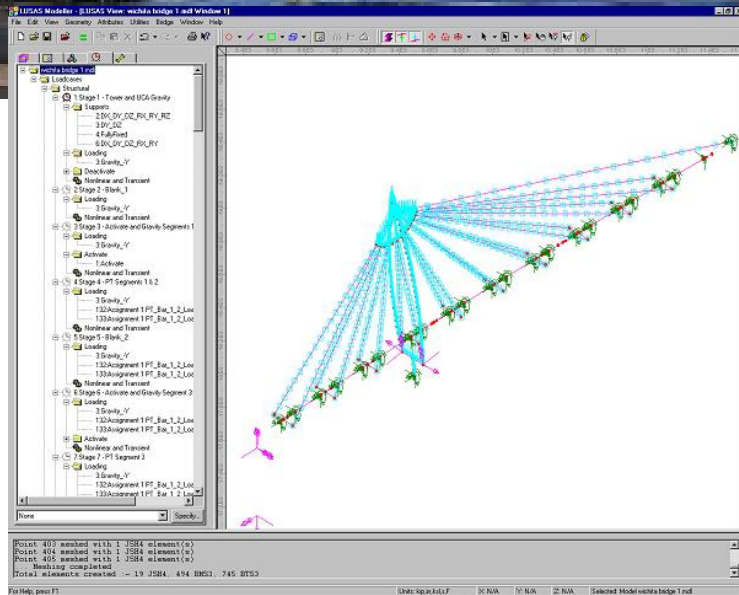
Ponte della Musica



Royal Victoria Dock Footbridge



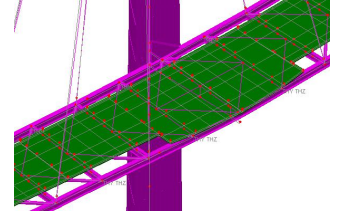
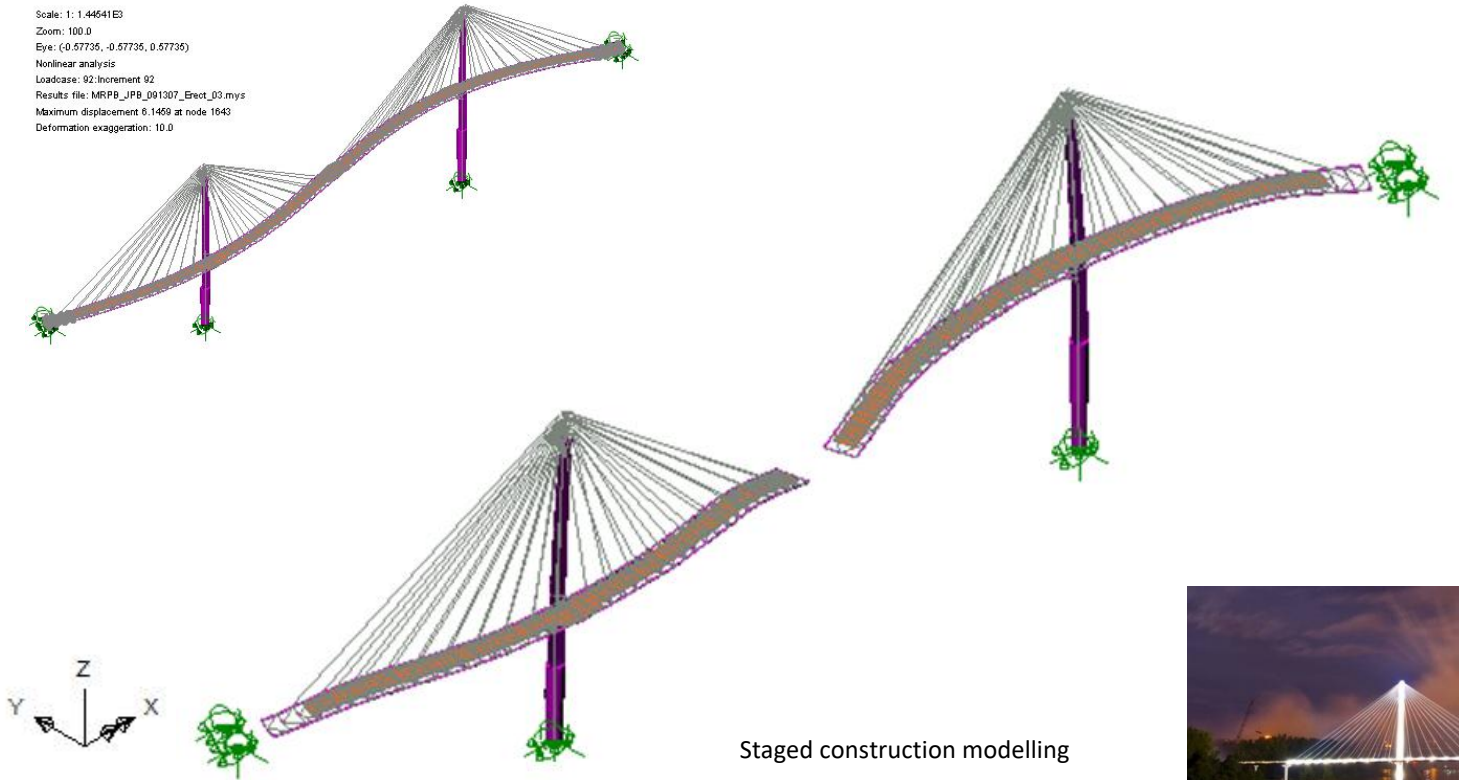
Wichita Footbridges



Genesis Structures

Omaha Footbridge

Scale: 1: 1.44641E3
Zoom: 100.0
Eye: (-0.57735, -0.57735, 0.57735)
Nonlinear analysis
Loadcase: 02: Increment 02
Results file: MRPB_JPB_091307_Erect_03.mys
Maximum displacement 6.1459 at node 1643
Deformation exaggeration: 10.0

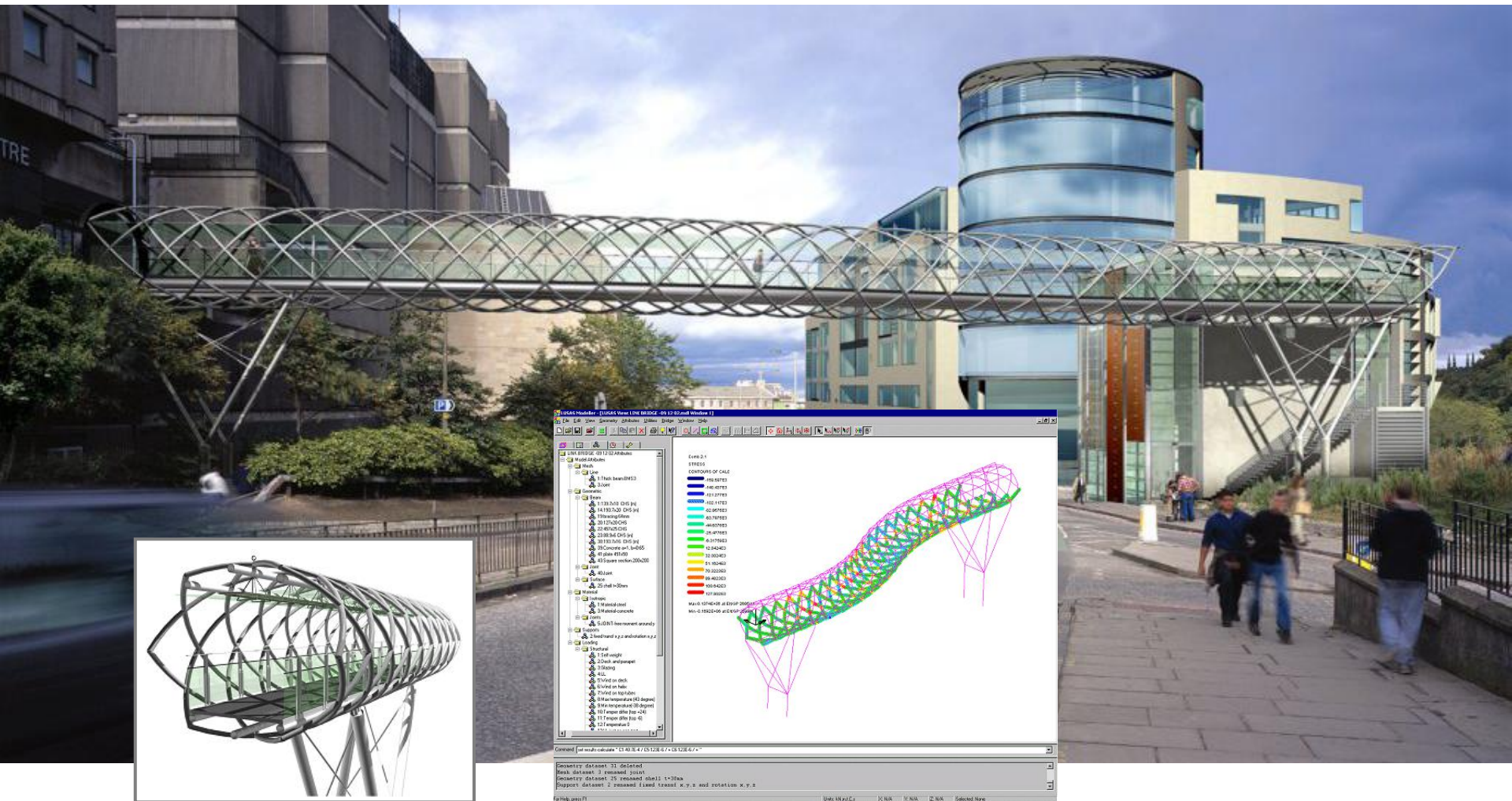


Staged construction modelling

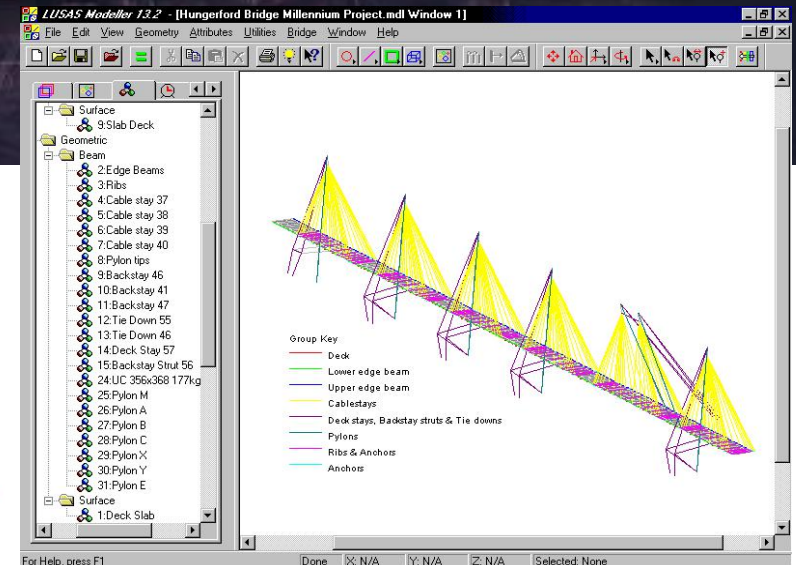
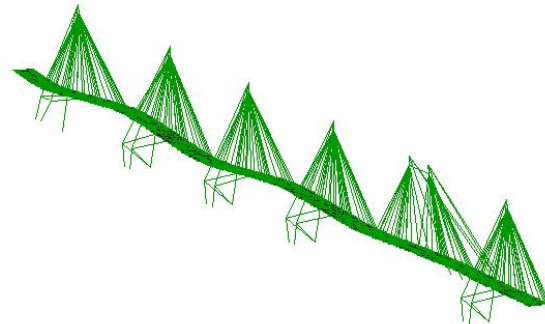
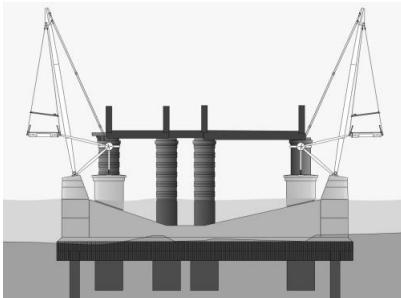


Genesis Structures

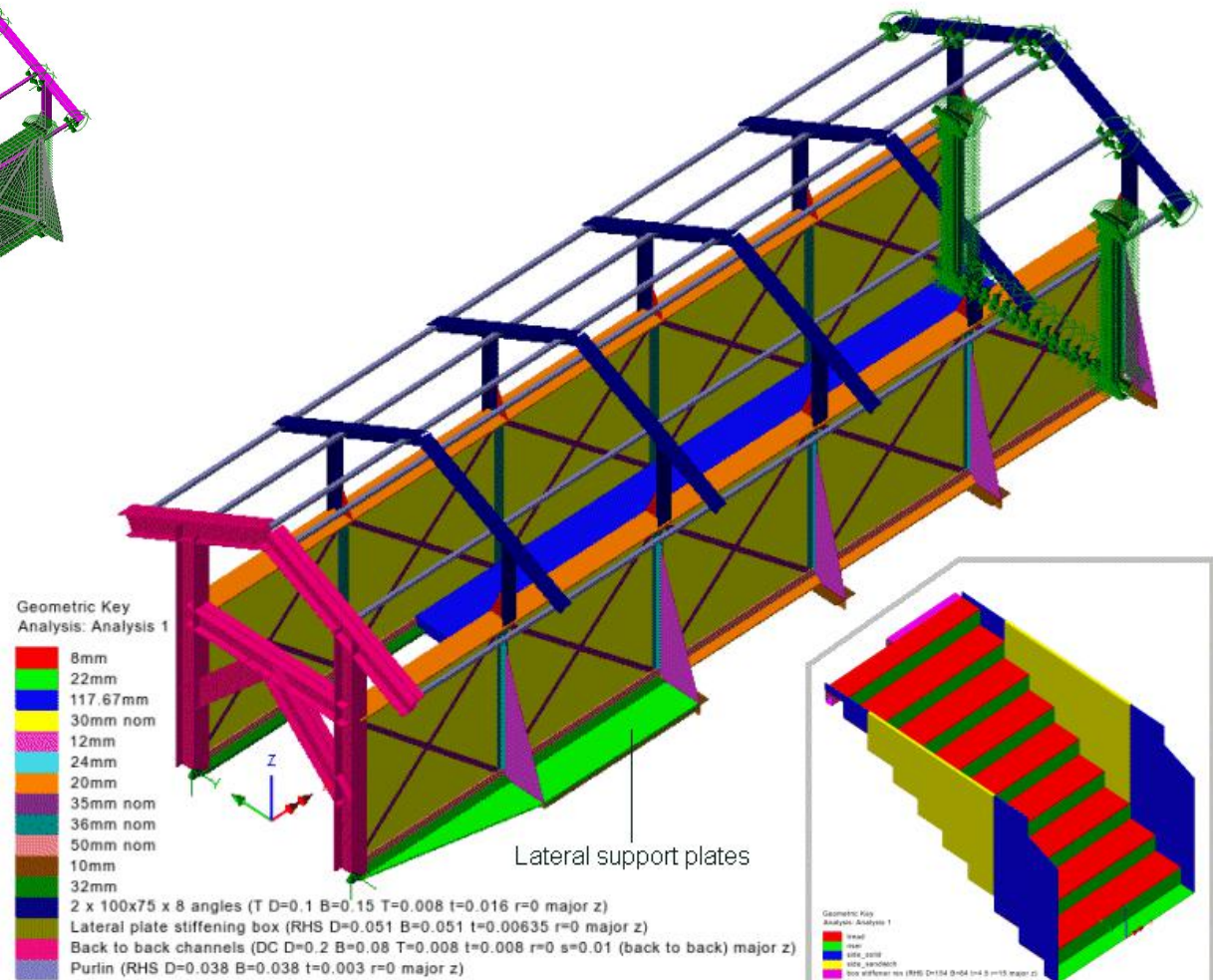
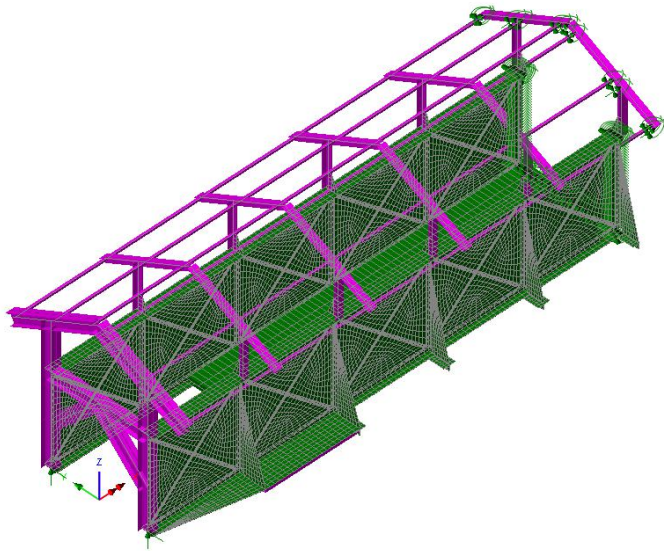
Greenside Place Link Bridge



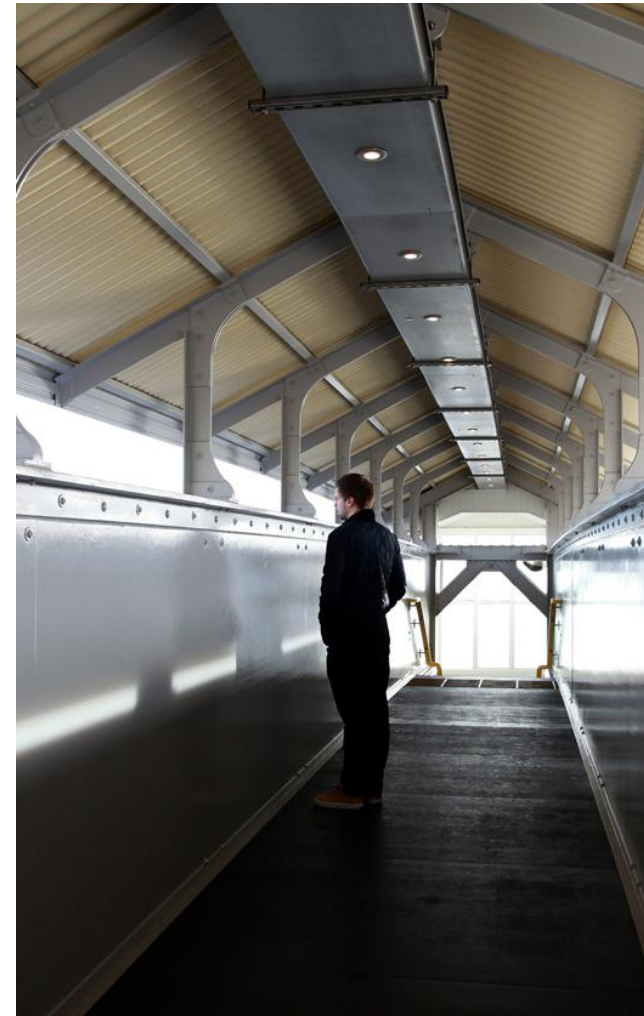
Hungerford Bridge



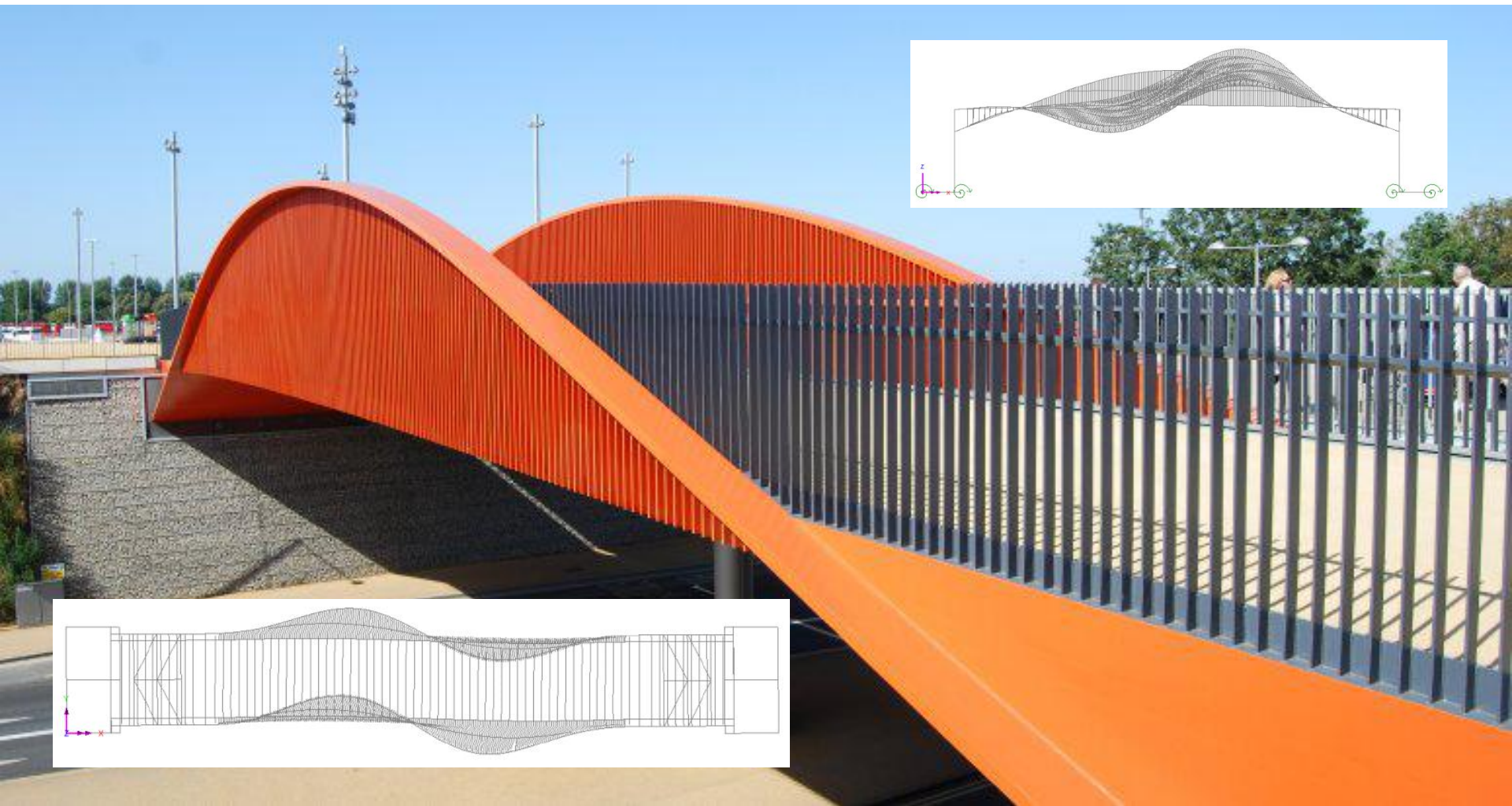
Dawlish Station Footbridge



Dawlish Station Footbridge



London Olympic Park Bridges



Glass Bridge



...for Movable Bridges



Chelsea Street Bridge



MediaCity Footbridge



Interhavn Bridge



Gateshead Millennium Bridge

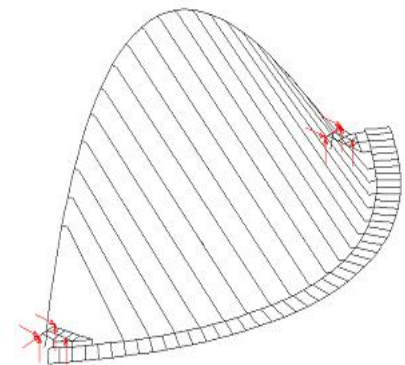


Twin Sails Bridge



Cathedral Green Footbridge

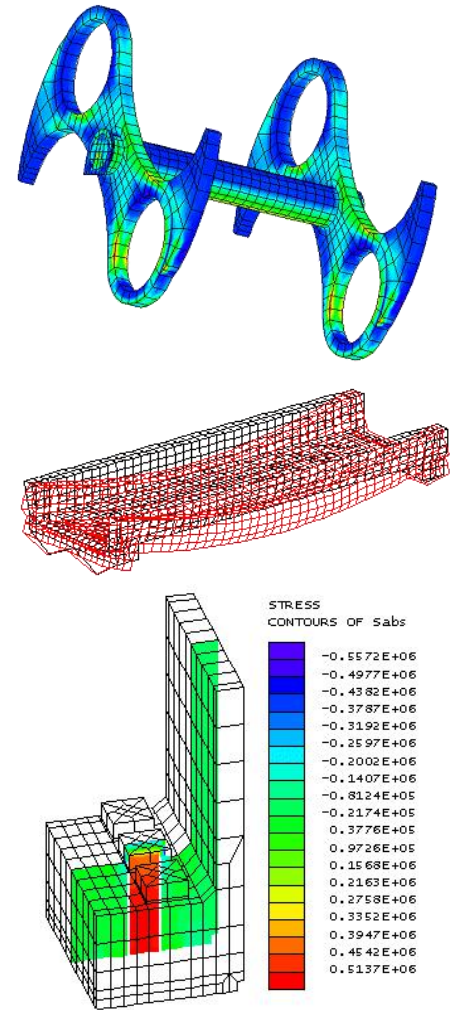
Gateshead Millennium Bridge



MediaCity Footbridge



Falkirk Wheel



Unique rotating boat lift

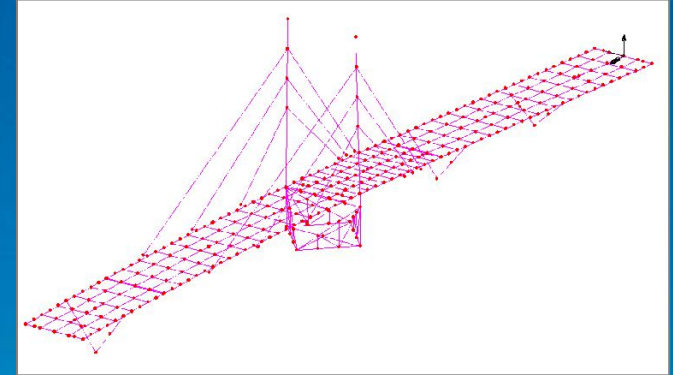
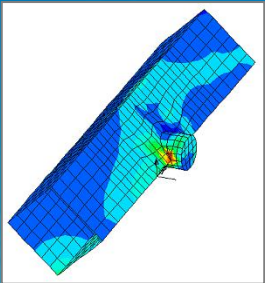
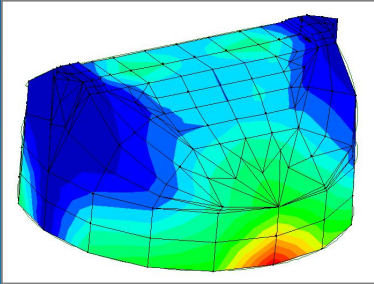
Cathedral Green Footbridge



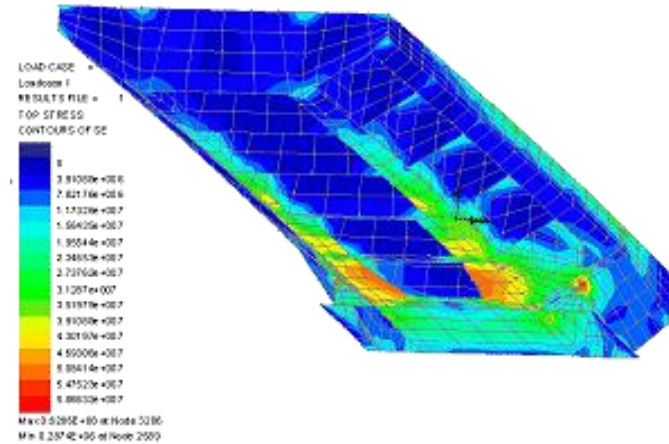
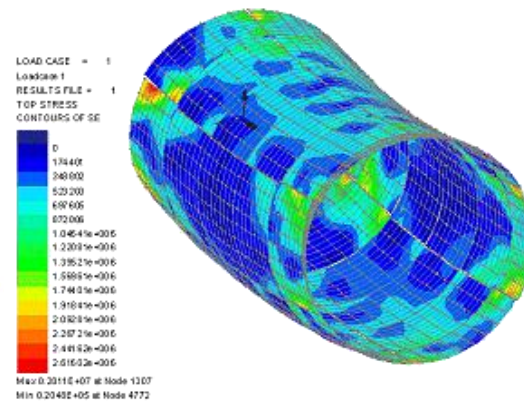
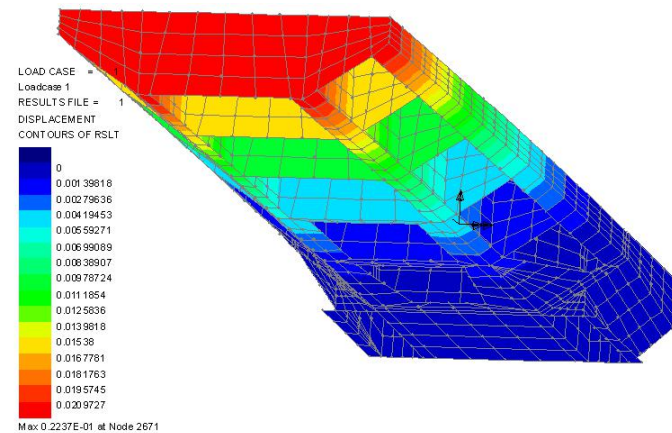
Ramboll

Asymmetric cable stayed swing bridge

Novisad Swing Bridge



Helix Bridge



Davy Markham

Retractable footbridge

Bellmouth Passage Swing Bridges



Wellington Street Swing Bridge

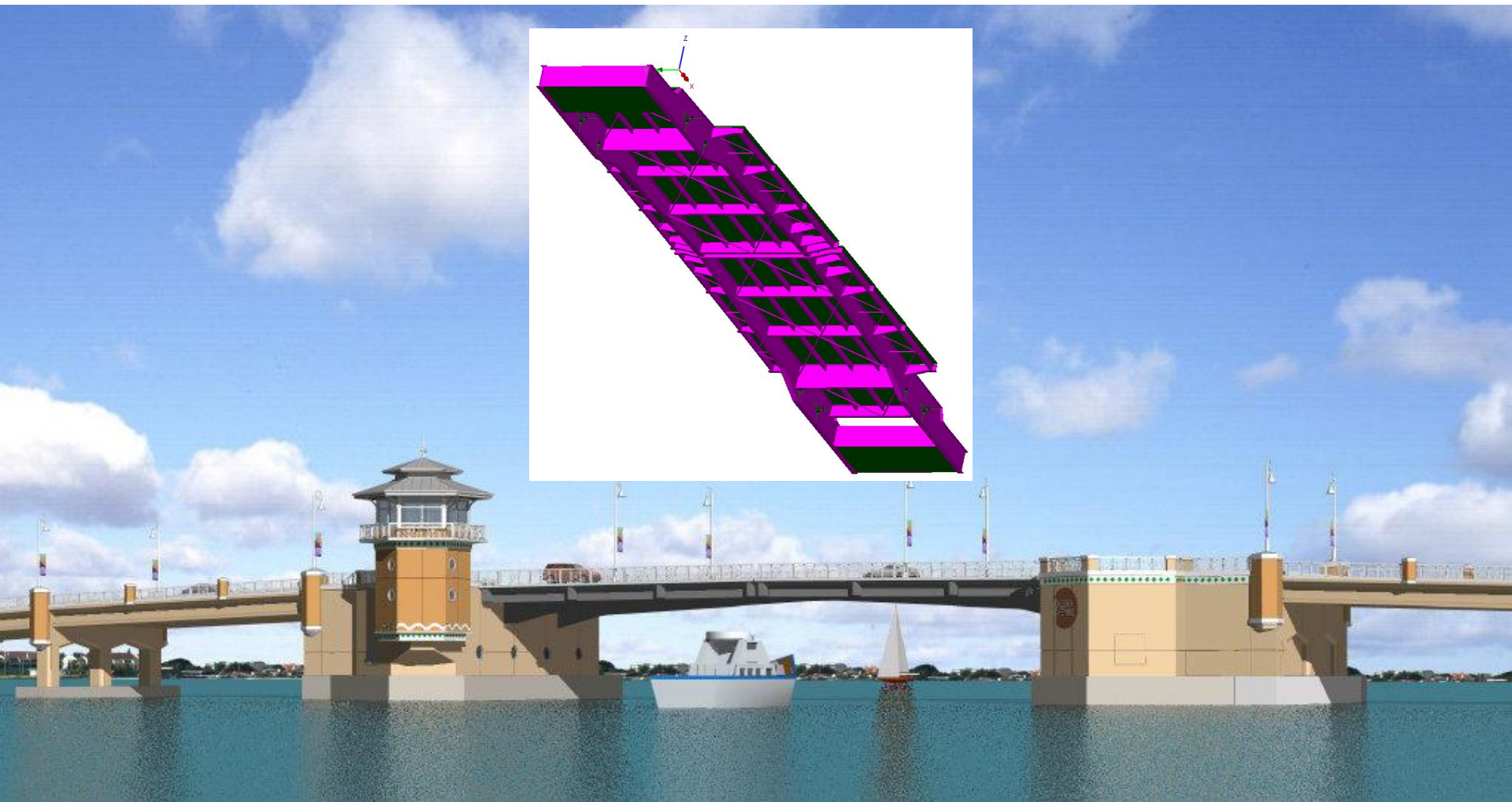


Great Wharf Road Bridge



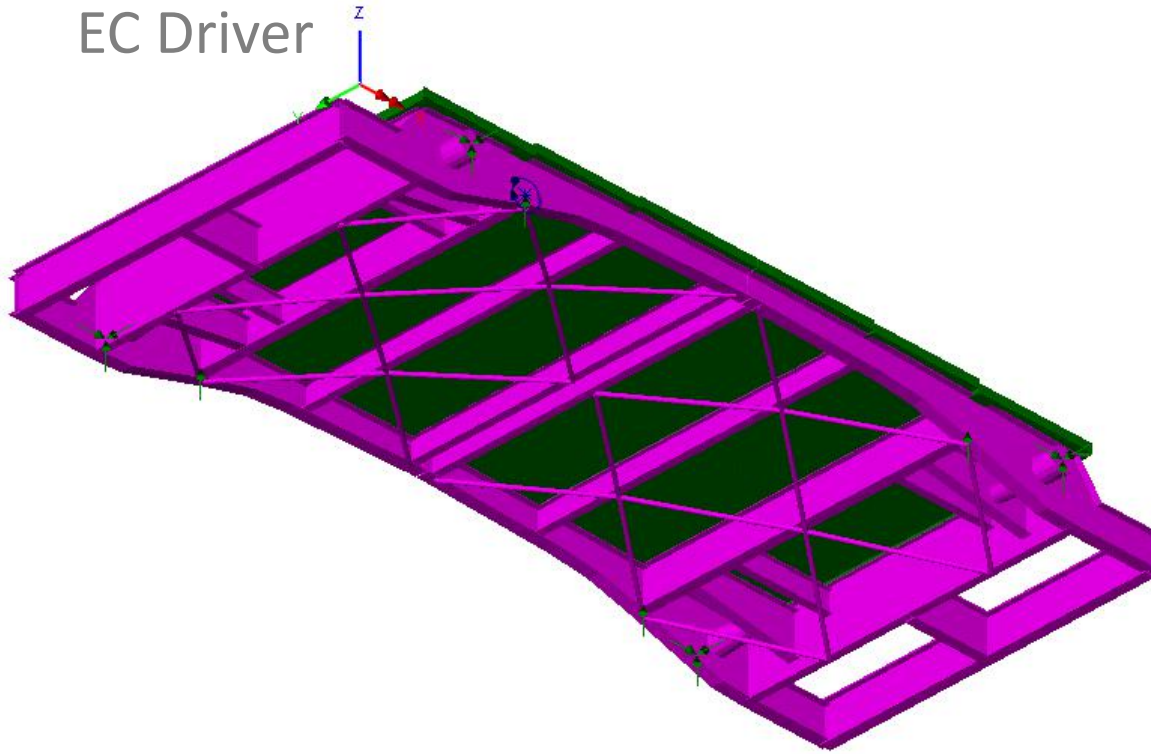
Tilting road bridge

Ocean Avenue Bridge



Port Ferdinand Bridge

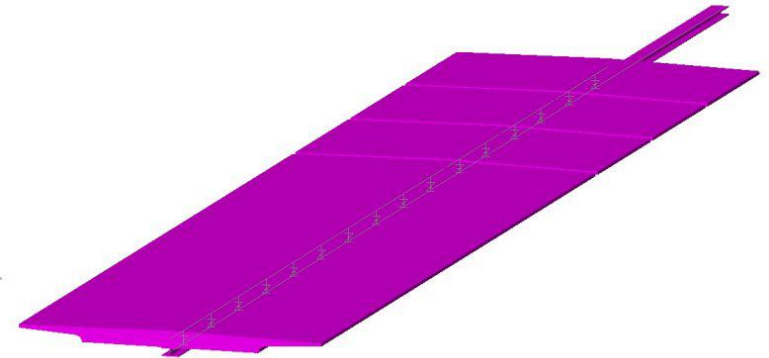
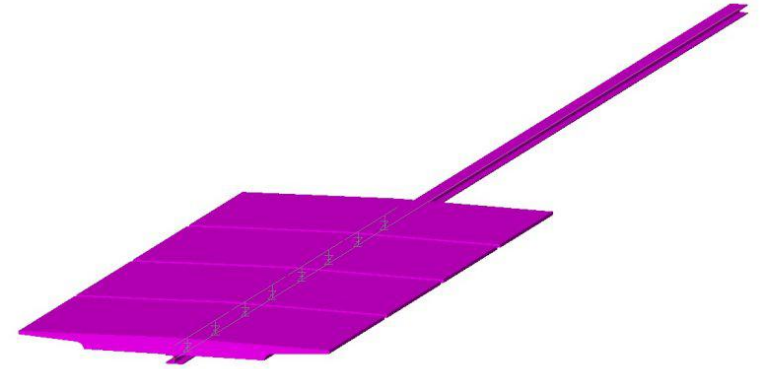
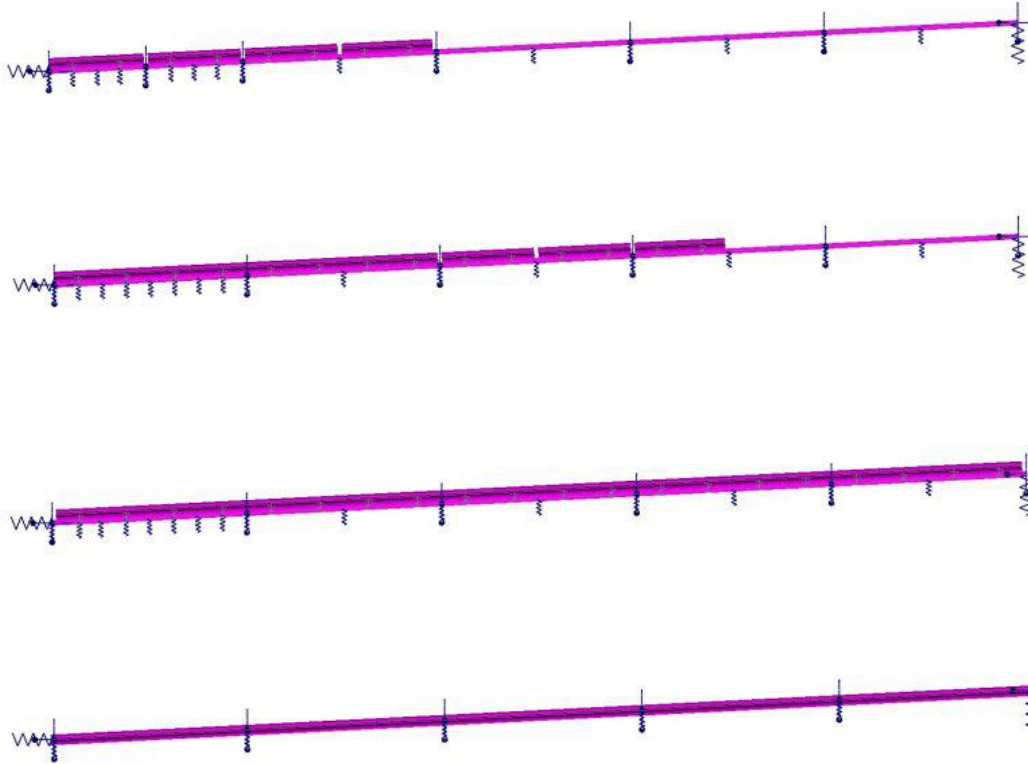
EC Driver



Double leaf trunnion bascule

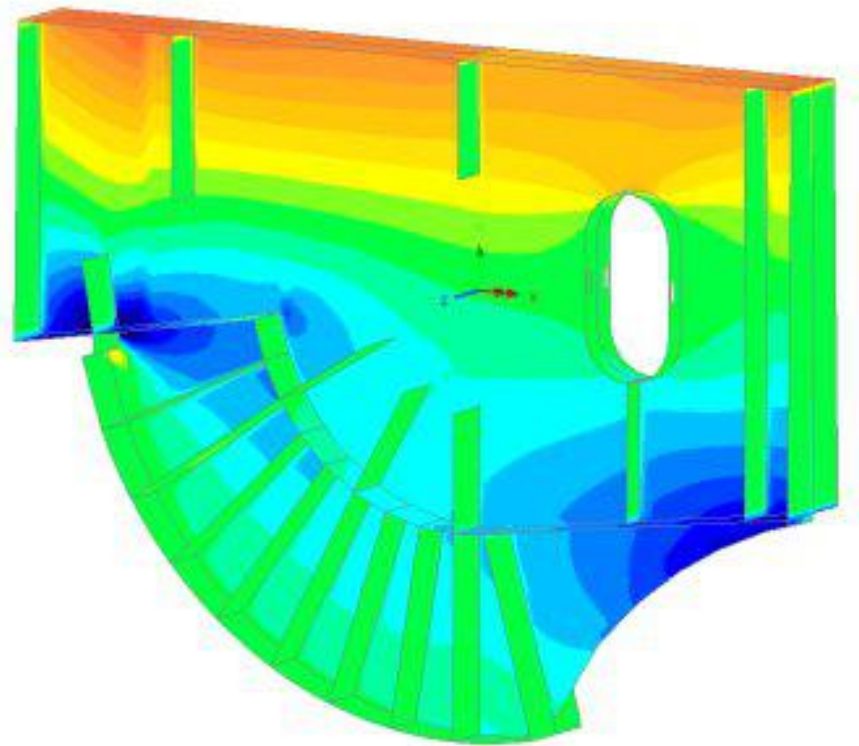
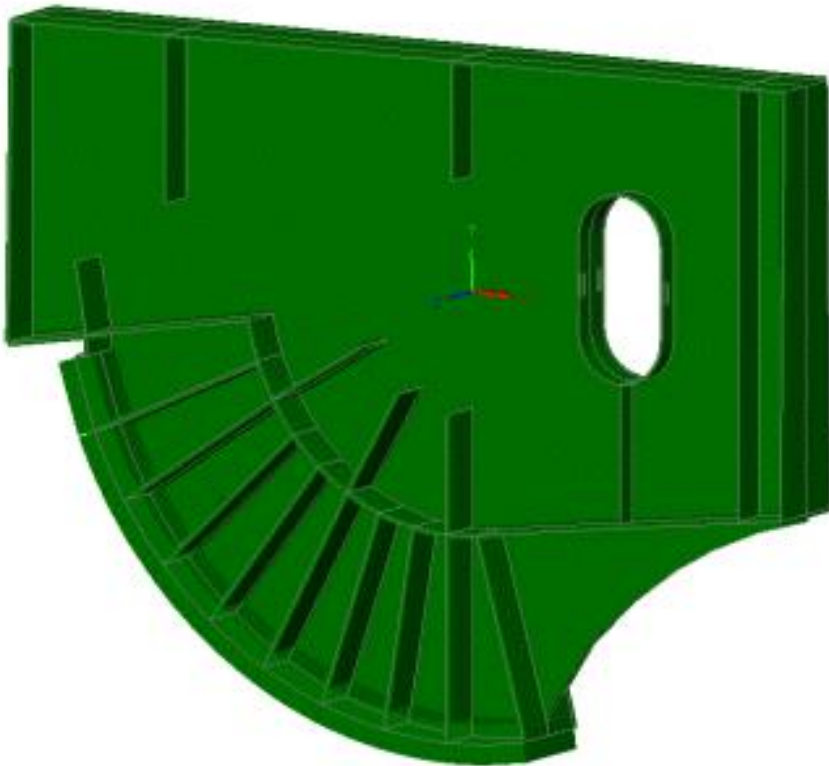
SR-80 Southern Boulevard Bridge

EC Driver



Double leaf trunnion bascule

SR-80 Southern Boulevard Bridge



Double leaf trunnion bascule

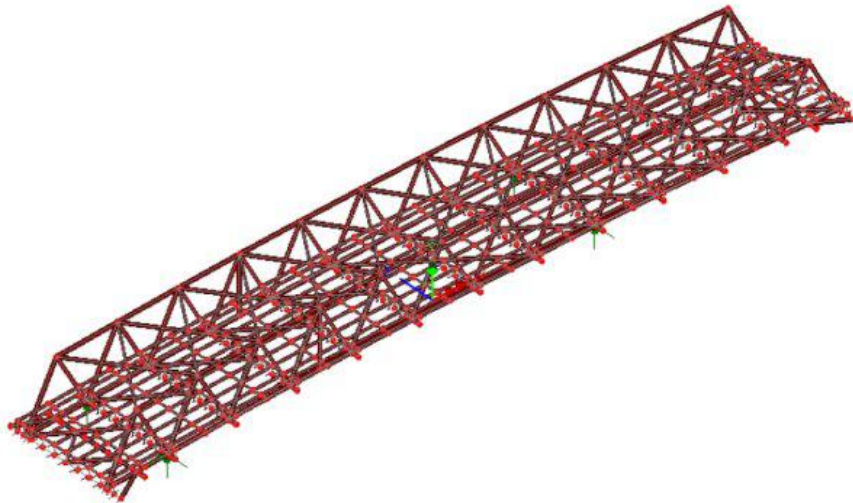
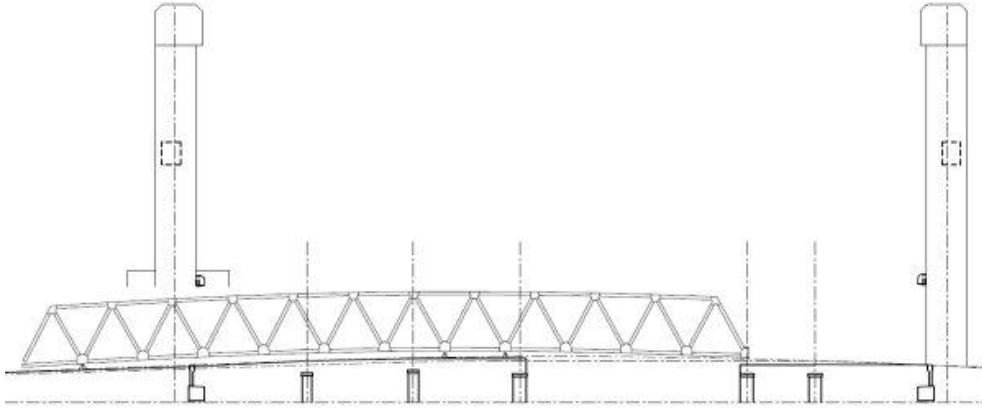
Chelsea Street Bridge



Finley Engineeringc

Floating barge bridge

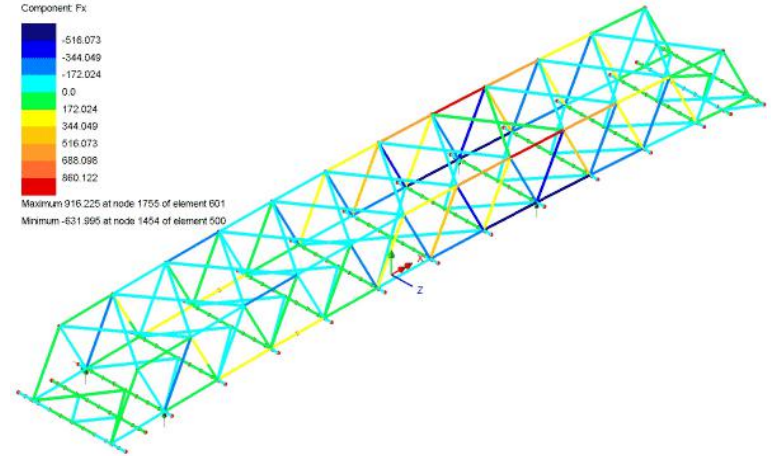
Chelsea Street Bridge



DC - Total
Entity: Force/Moment - Thin 3D Beam
Component: Fx



Maximum: 916.225 at node 1755 of element 601
Minimum: -631.995 at node 1454 of element 500

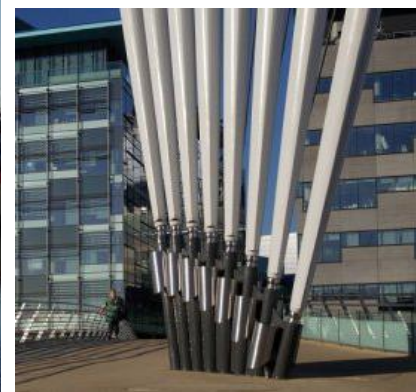


Vertical lifting bridge



Finley Engineering

MediaCity Footbridge



Twin Sails Bridge

